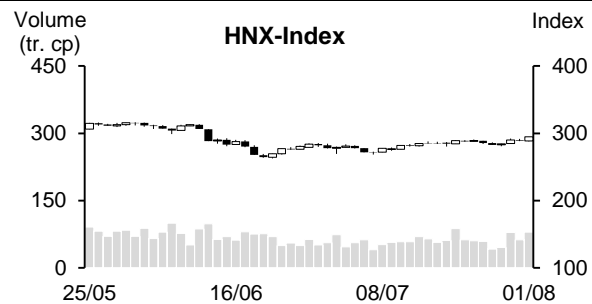
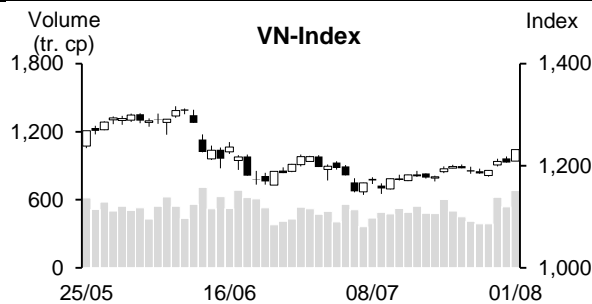


| 01/08/2022 | HOSE | | VN30 | | HNX | |
|-------------------------------------|------------------|---------------|-----------------|---------------|-----------------|---------------|
| | Value | Change % | Value | Change % | Value | Change % |
| Closing rate | 1,231.35 | 2.07% | 1,256.25 | 1.97% | 294.62 | 2.08% |
| Total volume (mil. shares) | 708.71 | 20.06% | 191.46 | 8.17% | 83.21 | 30.65% |
| Matched volume (mil. shares) | 681.87 | 26.96% | 175.84 | 23.58% | 79.74 | 28.18% |
| 20-session average (mil. shares) | 496.39 | 37.37% | 122.13 | 43.98% | 60.60 | 31.59% |
| Total value (bil dong) | 16,195.43 | 7.72% | 6,035.97 | -4.17% | 1,597.45 | 26.20% |
| Matched value (bil dong) | 15,234.72 | 17.95% | 5,311.43 | 14.55% | 1,522.54 | 24.18% |
| 20-session average (bil dong) | 10,617.63 | 43.49% | 3,736.91 | 42.13% | 1,182.57 | 28.75% |
| | Weight % | | Weight % | | Weight % | |
| Number of gainers | 359 | 69% | 30 | 100% | 152 | 59% |
| Number of droppers | 105 | 20% | 0 | 0% | 51 | 20% |
| Stand still codes | 60 | 11% | 0 | 0% | 53 | 21% |



REMARKABLE POINTS ON THE MARKET

The market welcomed August with an exploding session as main indexes closed at day highest levels with much higher liquidity than average. Green appeared from the beginning under the lead of blue-chips. Steel and securities stood out the most today with many codes closing on the ceiling with very high volume. Meanwhile, contributing mainly on the index's gain was banking and real estate. The gain on pillar codes helped investors getting excited, which spread the demand to many midcap and penny codes. Besides, the market was also supported by foreign investors that returned to a net buying.

TECHNICAL POINT OF VIEW

In technical term, VN-Index gained again. It gained with a thick candle and the volume increased strongly to above 10 and 20-session average, showing positive cash flow. Not just that, it surpassed MA50 pressure and MA5 differentiated positively from MA20, showing stronger gaining trend in short-term. Moreover, MACD and RSI increased and supported current gaining trend, so the index might move to challenge resistant level around GAP level of June 13 or 1,260-1,280 points. For HNX, HNX-Index saw similar situation. It also gained strongly with higher volume, showing stronger gaining trend and the index might move to challenge sentimental resistant of 300 points. In general, the market is on short-term recovering trend. Therefore, investors should consider using the shake to raise a small weight. In which, having priority on good fundamental codes with positive business prospect that can attract strong cash flow.

Recommending code: VTP (Take profit))

Observing code: HPG, SBT, GEG

(Details in page 2)

RECOMMENDING CODES AS PER TECHNICAL SIGNS

Codes of the day

| No | Ticker | Recommend | Recommended date | Current Price | Operation Price | Current profit/loss | Target Price | Expected profit | Cut loss price | Expected Loss | Note |
|----|--------|-------------|------------------|---------------|-----------------|---------------------|--------------|-----------------|----------------|---------------|--------------------------|
| 1 | VTP | Take profit | 02/08/22 | 60.38 | 55.8 | 8.2% | 62 | 11.1% | 53 | -5.0% | Gaining trend slows down |

| No | Ticker | Recommend | Recommended date | Current Price | Resistance | Technical sign |
|----|--------|----------------|------------------|---------------|------------|---|
| 1 | HPG | Observe to buy | 02/08/22 | 22.8 | 27-29 | Good gaining candle with high vol. again + MACD creates hook -> might successfully test bottom, might buy if gaining further to above 23.5 with high vol. |
| 2 | SBT | Observe to buy | 02/08/22 | 18.35 | 21.6-22.6 | Positive collecting sign recently with lower vol. + gain again with higher vol. -> might soon break out, might buy if surpassing 18.7 with high vol. |
| 3 | GEG | Observe to buy | 02/08/22 | 21.55 | 26-27 | Base-withdraw candle with high vol. + MACD stays above Signal -> might create bottom again, need to surpass 22.2 with bol. To confirm |

List of recommended codes

| No | Ticker | Recommend | Recommended date | Current Price | Operation Price | Current profit/loss | Target Price | Expected profit | Cut loss price | Expected Loss | Note |
|----|--------|-----------|------------------|---------------|-----------------|---------------------|--------------|-----------------|----------------|---------------|-------------------------------|
| 1 | SAB | Hold | 22/06/22 | 183 | 155 | 18.1% | 200 | 29.0% | 149 | -3.9% | Raise target price to 200,000 |
| 2 | TCB | Buy | 08/07/22 | 38.60 | 37.8 | 2.1% | 42.7 | 13.0% | 35.5 | -6.1% | |
| 3 | BVH | Buy | 12/07/22 | 59.2 | 54.6 | 8.4% | 61 | 11.7% | 52.5 | -4% | |
| 4 | MSR | Buy | 20/07/22 | 19.815 | 19.18 | 3.3% | 24.5 | 27.7% | 18.1 | -6% | |
| 5 | VNM | Buy | 22/07/22 | 73.5 | 73.2 | 0.4% | 79.5 | 8.6% | 71 | -3% | |
| 6 | VCG | Buy | 27/07/22 | 23.3 | 21.5 | 8.4% | 26.7 | 24% | 20.6 | -4% | |
| 7 | BCC | Buy | 28/07/22 | 15.8 | 15.2 | 3.9% | 17.8 | 17% | 14.4 | -5% | |
| 8 | CSV | Buy | 29/07/22 | 43.4 | 44.6 | -2.7% | 53.7 | 20% | 42.4 | -5% | |

DAILY NEWS

Domestic news

July PMI is over 51 points, production is expanded in 10th consecutive month

IHS Markit report showed that Purchase Manager Index (PMI) in July in Vietnam is 51.2 points, lower than 54 points in June. This is the 10th month that Vietnam PMI is above 50 points, showing that the production industry is recovering.

New order also increased in the 10th month in a row, so manufacturers are raising the production in June with a growth in the 4th month in a row. At the same time, number of new export order also increased strongly. Along with it, manufacturers also raised input material purchase to serve the production. Besides, product inventory dropped last month.

Top 10 locals on State budget disbursement in 7 months 2022

In July, State Treasury disbursement is about 46.2 trillion, up by 22.5% YoY. In 7 months, it is about 237.6 trillion, reaching 43.3% year target and up by 11.9% YoY (same period 2011 was 42.3% and up by 6.3%).

The disbursement managed by the Central is about 41.7 trillion in 7 months, reaching 40.1% year target, up by 15.3% YoY. By Ministries and Industries, Ministry of Transport has the highest disbursement from the Central with over 21.6 trillion, reaching 49.6% year target, and up by over 23% YoY.

Besides, disbursement managed by locals is about 195.9 trillion, reaching 44.1% year target and up by 11.2% YoY.

By locals, Hanoi has the highest disbursement with nearly 24 trillion in 7 months, reaching 47.1% year target and up by 0.8% YoY.

HCMC is next with nearly 14 trillion in 7 months, reaching 34.2% year target and up by 9.8% YoY.

Quang Ninh is third with nearly 9 trillion – 53% year target, but down by 8.8% YoY, followed by Hai Phong and Thanh Hoa with 6,329 and 5,700 billion.

Other provinces in the top 10 are Ba Ria – Vung Tau, Nghe An, Binh Dinh, Binh Duong, and Dong Nai.

Forestry product export is about 10.42 billion USD in 7 months

General Department of Forestry, Ministry of Agriculture and Rural Development stated that forestry export in July is about 1.41 billion USD, down by 5.5% MoM and 1.6% YoY. However, in 7 months, export value still increased by 1.3% YoY to 10.42 billion USD.

In 7 months, wood and forestry product exported to 110 countries and regions. In which, America, Japan, China, EU, and Korea are still main export countries, accounting 90% total export value in the country.

Source: NDH, Cafef

Listing Company News

Novaland profit is 1,818 billion in half a year

Novaland (HoSE: NVL) released Q2 combined finance statements with over 4,628 billion dong of total revenue and EAT is nearly 1,818 billion in 6 months.

Total revenue includes revenue from selling and service fee. In which, selling revenue is nearly 3,723 billion, accounted from the delivery of NovaWorld Phan Thiet, Aqua City, NovaWorld Ho Tram, NovaHills Mui Ne, Soho Residence, and Victoria Village.

On June 30, the group total asset is over 239,277 billion, 18.6% higher than the end of 2021.

Masan Group Q2 net profit increased by 24% YoY

Masan Group (HoSE: MSN) has released Q2 results with net revenue of 17,834 billion, down by 16% YoY. However, cost dropped by 21.4% to 12,866 billion so gross margin improved from 22.8% to 28.8%.

Finance revenue is 585 billion, up by 2.3 times YoY with higher deposit interest and exchange rate difference profit. Finance, selling, and management expenses all increased by 12.9%; 9.9%; and 12.9%.

As the result, EAT is 1,215 billion, up by 15.4% YoY. EAT is 980.9 billion, up by 24%, EPS improved from 561 to 692 dong since Masan Group has issued nearly 7 million ESOP shares this year.

In 6 months, Masan Group net revenue is 36,023 billion, 12.6% lower than the beginning of 2021. Parent company EAT I 2,576 billion, up by 2.6 times YoY.

On June 30, Masan Group total asset is 125,260 billion, 833 billion dong lower than the beginning of the year.

The CrownX is an consumption – retail base integrating WinCommerce and Masan Consumer Holdings with net revenue of 26,092 billion, up by 2.2% YoY. EBITDA is 3,178 billion in half year 2022, up by 11.7%.

Masan High-Tech Materials (UPCoM:MSR) - wolfram of Masan Group net revenue is 8,123 billion and EBITDA is 1,822 billion in half a year, up by 33% and 52.6% YoY with higher price and higher demand on industrial materials.

For Masan MEATLife's (UPCoM: MML), net revenue dropped by 81% YoY to 1,941 billion in half a year.

MWG Q2 profit dropped, until the end of Q3, there will be 1,700-1,800 Bach Hoa Xanh stores

Mobile World (HoSE: MWG) half-year revenue is 70,804 billion, up by 13%, reaching 51% year target. EAT is 2,576 billion, nearly the same, reaching 41% year target.

In Q2 alone, revenue is 34,337 billion, EAT is 1,131 billion, up by 8% and down by 6.6% YoY.

For revenue, The Gioi Di Dong and Dien May Xanh contributes 38 trillion or 80.5% weight, up by 17% YoY with higher market share on phone and electronic devices.

Source: NDH

MARKET STATISTICS**Statistics on matching trade****TOP 5 IMPACTING GAINERS**

| HOSE | | | |
|--------|------------------|-------------|-------------|
| Ticker | Closing (VND) | Change % | Impact % |
| VCB | 77,000 | 3.08% | 0.23% |
| BID | 39,000 | 4.56% | 0.18% |
| HPG | 22,800 | 6.05% | 0.16% |
| CTG | 28,700 | 5.51% | 0.15% |
| MSN | 109,400 | 3.11% | 0.10% |

| HNX | | | |
|--------|------------------|-------------|-------------|
| Ticker | Closing (VND) | Change % | Impact % |
| SHS | 14,200 | 8.40% | 0.26% |
| IPA | 22,600 | 9.71% | 0.13% |
| THD | 58,100 | 1.93% | 0.11% |
| MBS | 23,700 | 6.28% | 0.11% |
| CEO | 32,800 | 4.46% | 0.11% |

TOP 5 IMPACTING DROPPERS

| HOSE | | | |
|--------|------------------|-------------|-------------|
| Ticker | Closing (VND) | Change % | Impact % |
| HNG | 6,080 | -6.32% | -0.01% |
| VSH | 38,000 | -3.31% | -0.01% |
| SVC | 99,400 | -6.93% | -0.01% |
| HDG | 51,900 | -1.89% | -0.01% |
| VGC | 60,800 | -0.65% | 0.00% |

| HNX | | | |
|--------|------------------|-------------|-------------|
| Ticker | Closing (VND) | Change % | Impact % |
| DTK | 12,000 | -4.00% | -0.10% |
| PVI | 45,600 | -2.15% | -0.07% |
| MVB | 20,000 | -6.98% | -0.05% |
| PTI | 57,200 | -3.05% | -0.04% |
| CDN | 27,200 | -2.51% | -0.02% |

TOP 5 IN MATCHING VOLUME

| HOSE | | | |
|--------|------------------|-------------|-------------------|
| Ticker | Closing (VND) | Change % | Volume (share) |
| VND | 20,400 | 6.81% | 42,530,300 |
| HPG | 22,800 | 6.05% | 38,143,900 |
| SSI | 22,800 | 6.79% | 29,169,900 |
| HNG | 6,080 | -6.32% | 21,593,800 |
| SHB | 15,050 | 2.73% | 21,057,000 |

| HNX | | | |
|--------|------------------|-------------|-------------------|
| Ticker | Closing (VND) | Change % | Volume (share) |
| SHS | 14,200 | 8.40% | 20,380,286 |
| CEO | 32,800 | 4.46% | 7,136,503 |
| PVS | 23,500 | 2.17% | 6,773,968 |
| HUT | 30,400 | 2.70% | 3,596,891 |
| KLF | 3,200 | 0.00% | 2,439,751 |

TOP 5 IN MATCHING VALUE

| HOSE | | | |
|--------|------------------|-------------|---------------------|
| Ticker | Closing (VND) | Change % | Value (bil. VND) |
| HPG | 22,800 | 6.05% | 852.2 |
| VND | 20,400 | 6.81% | 849.6 |
| SSI | 22,800 | 6.79% | 651.6 |
| STB | 25,200 | 2.02% | 420.2 |
| DGC | 91,000 | 1.90% | 381.9 |

| HNX | | | |
|--------|------------------|-------------|---------------------|
| Ticker | Closing (VND) | Change % | Value (bil. VND) |
| SHS | 14,200 | 8.40% | 280.8 |
| CEO | 32,800 | 4.46% | 229.1 |
| PVS | 23,500 | 2.17% | 157.3 |
| IDC | 62,300 | 0.97% | 118.0 |
| HUT | 30,400 | 2.70% | 108.1 |

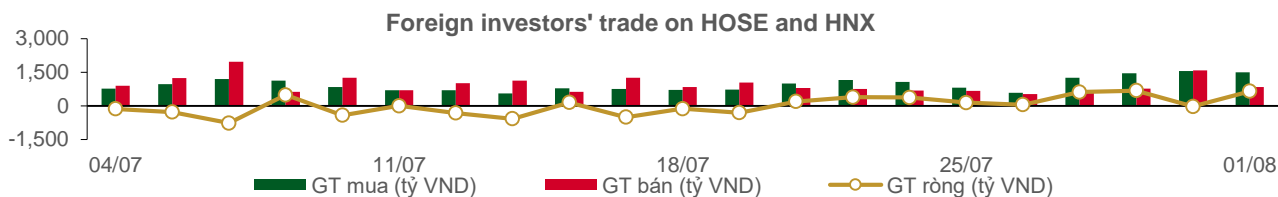
Statistics on agreement trades**TOP 5 IN AGREEMENT TRADES**

| HOSE | | |
|--------|---------------------------|-------------------------------|
| Ticker | Agreement vol. (share) | Agreement value (bil. VND) |
| NVL | 3,348,941 | 252.88 |
| VIB | 4,650,000 | 124.95 |
| HDB | 3,007,626 | 72.10 |
| VHM | 1,081,300 | 64.86 |
| MWG | 976,400 | 60.61 |

| HNX | | |
|--------|---------------------------|-------------------------------|
| Ticker | Agreement vol. (share) | Agreement value (bil. VND) |
| HUT | 900,000 | 24.03 |
| BAB | 1,112,667 | 18.92 |
| GKM | 387,000 | 16.37 |
| SHS | 1,000,000 | 13.10 |
| EVS | 68,200 | 2.00 |

Statistics on foreign investors' trade

| Exchange | Buying vol. (mil. share) | Buying value (bil. VND) | Selling vol. (mil. share) | Selling value (bil. VND) | Net selling/ buying value (mil. share) | Net selling/ buying value (bil. VND) |
|--------------|-----------------------------|----------------------------|------------------------------|-----------------------------|--|--|
| HOSE | 53.69 | 1,481.18 | 29.05 | 820.77 | 24.64 | 660.41 |
| HNX | 0.70 | 14.56 | 1.25 | 24.16 | (0.55) | (9.60) |
| Total | 54.39 | 1,495.74 | 30.30 | 844.93 | 24.09 | 650.81 |



TOP 5 BOUGHT-IN

| HOSE | | | |
|--------|------------------|------------------------|----------------------------|
| Ticker | Closing (VND) | Buying vol. (share) | Buying value (bil. VND) |
| SSI | 22,800 | 5,947,500 | 134.13 |
| STB | 25,200 | 4,555,500 | 115.00 |
| VNM | 73,500 | 1,385,100 | 100.55 |
| HPG | 22,800 | 4,327,600 | 97.11 |
| KBC | 39,550 | 2,018,900 | 79.38 |

| HNX | | | |
|--------|------------------|------------------------|----------------------------|
| Ticker | Closing (VND) | Buying vol. (share) | Buying value (bil. VND) |
| SHS | 14,200 | 360,000 | 4.99 |
| IDC | 62,300 | 71,300 | 4.41 |
| TNG | 27,700 | 109,500 | 3.01 |
| IVS | 8,000 | 32,900 | 0.26 |
| IDJ | 15,200 | 16,000 | 0.24 |

TOP 5 SOLD-OUT

| HOSE | | | |
|----------|------------------|-------------------------|-----------------------------|
| Ticker | Closing (VND) | Selling vol. (share) | Selling value (bil. VND) |
| VNM | 73,500 | 1,308,800 | 94.94 |
| MWG | 61,300 | 961,400 | 59.71 |
| DGC | 91,000 | 612,500 | 52.18 |
| FPT | 84,000 | 600,000 | 50.69 |
| FUEVFVND | 26,350 | 1,337,600 | 34.87 |

| HNX | | | |
|--------|------------------|-------------------------|-----------------------------|
| Ticker | Closing (VND) | Selling vol. (share) | Selling value (bil. VND) |
| PVS | 23,500 | 636,600 | 14.83 |
| SHS | 14,200 | 406,000 | 5.60 |
| NVB | 28,900 | 34,900 | 1.01 |
| MCF | 7,800 | 64,700 | 0.50 |
| HUT | 30,400 | 11,900 | 0.35 |

TOP 5 NET BUYING

| HOSE | | | |
|--------|------------------|---------------------|------------------------|
| Ticker | Closing (VND) | Net vol. (share) | Net value (bil VND) |
| SSI | 22,800 | 5,092,100 | 114.87 |
| STB | 25,200 | 4,156,700 | 104.96 |
| HPG | 22,800 | 3,397,900 | 76.31 |
| KBC | 39,550 | 1,667,700 | 65.62 |
| CTG | 28,700 | 2,311,500 | 65.58 |

| HNX | | | |
|--------|------------------|---------------------|------------------------|
| Ticker | Closing (VND) | Net vol. (share) | Net value (bil VND) |
| IDC | 62,300 | 65,800 | 4.07 |
| TNG | 27,700 | 109,500 | 3.01 |
| PCG | 7,100 | 26,000 | 0.18 |
| TA9 | 14,900 | 11,300 | 0.17 |
| VCS | 74,700 | 2,000 | 0.15 |

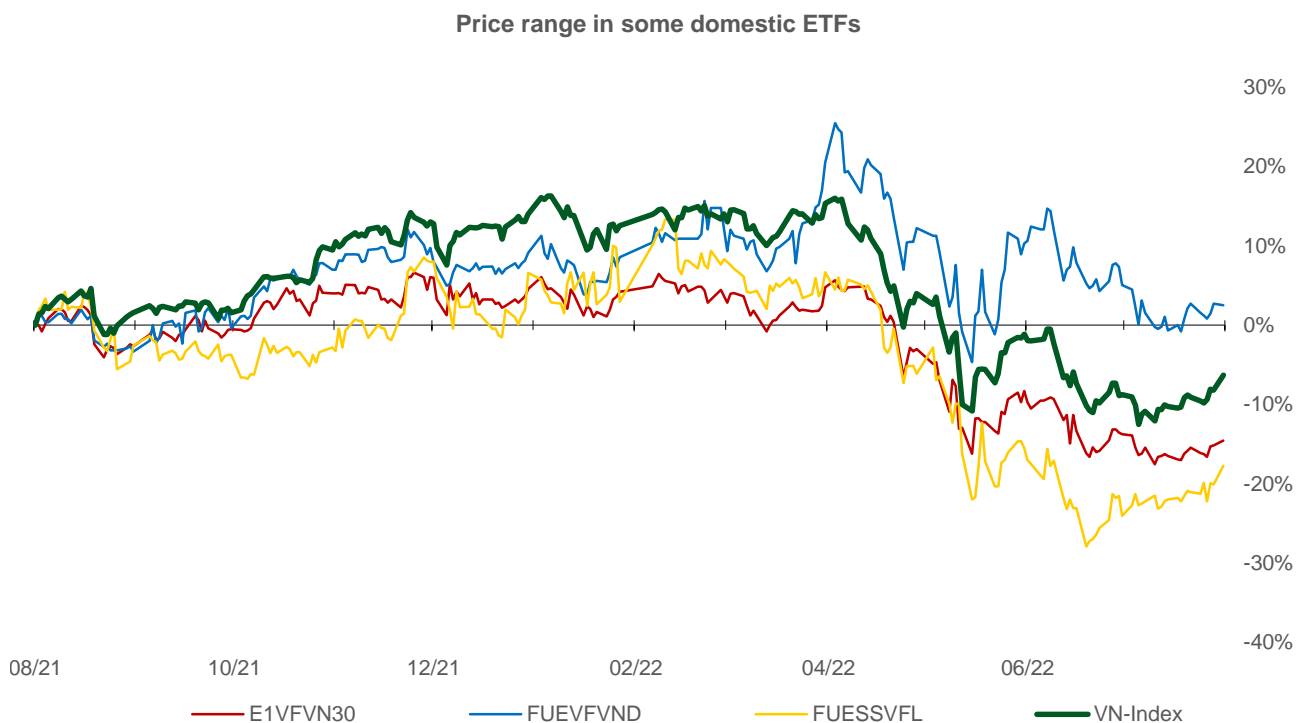
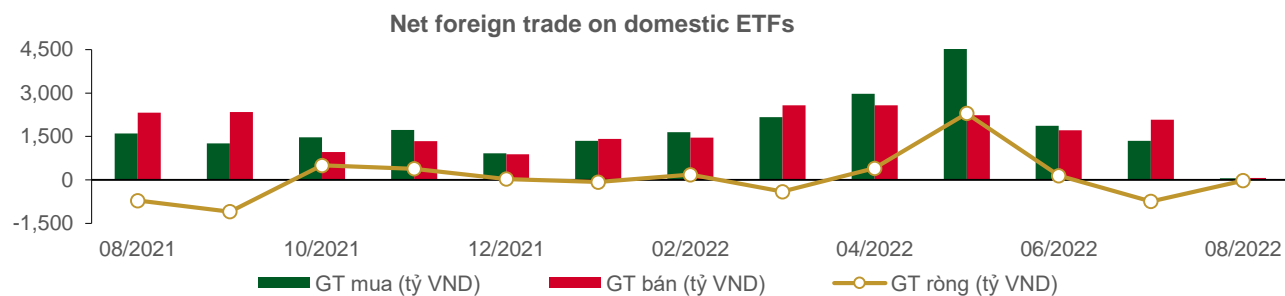
TOP 5 NET SELLING

| HOSE | | | |
|----------|------------------|---------------------|------------------------|
| Ticker | Closing (VND) | Net vol. (share) | Net value (bil VND) |
| DGC | 91,000 | (461,400) | (39.25) |
| TLG | 54,000 | (589,600) | (31.84) |
| FUEVFVND | 26,350 | (851,300) | (22.21) |
| VGC | 60,800 | (255,300) | (15.50) |
| FRT | 74,000 | (176,600) | (12.25) |

| HNX | | | |
|--------|------------------|---------------------|------------------------|
| Ticker | Closing (VND) | Net vol. (share) | Net value (bil VND) |
| PVS | 23,500 | (635,600) | (14.81) |
| NVB | 28,900 | (34,900) | (1.01) |
| SHS | 14,200 | (46,000) | (0.61) |
| MCF | 7,800 | (64,700) | (0.50) |
| HUT | 30,400 | (8,400) | (0.25) |

Statistics on domestic ETF share trade

| PRICE | | | | | FOREIGN TRADE | | | |
|--------------|-------------|------------|------------------|-----------------|---------------|------------------|-------------------|---------------------|
| Ticker | Closing VND | Change (%) | Volume (share) | Value (bil VND) | Ticker | Buying (bil VND) | Selling (bil VND) | Net value (bil VND) |
| E1VFN30 | 21,100 | 0.7% | 1,661,600 | 34.91 | E1VFN30 | 18.34 | 29.72 | (11.37) |
| FUEMAV30 | 14,790 | 1.5% | 102,600 | 1.50 | FUEMAV30 | 1.34 | 1.34 | 0.00 |
| FUESSV30 | 15,100 | 0.3% | 10,800 | 0.16 | FUESSV30 | 0.12 | 0.01 | 0.12 |
| FUESSV50 | 17,990 | 2.9% | 18,900 | 0.33 | FUESSV50 | 0.00 | 0.11 | (0.11) |
| FUESSVFL | 17,350 | 3.0% | 1,182,700 | 20.53 | FUESSVFL | 19.88 | 7.09 | 12.79 |
| FUEVFN30 | 26,350 | -0.2% | 1,411,200 | 36.79 | FUEVFN30 | 12.67 | 34.87 | (22.21) |
| FUEVN100 | 15,900 | 0.1% | 66,800 | 1.07 | FUEVN100 | 0.57 | 0.74 | (0.17) |
| FUEIP100 | 9,110 | 1.8% | 71,700 | 0.65 | FUEIP100 | 0.00 | 0.00 | 0.00 |
| FUEKIV30 | 8,190 | 1.0% | 52,400 | 0.43 | FUEKIV30 | 0.21 | 0.20 | 0.01 |
| Total | | | 4,578,700 | 96.37 | Total | 53.14 | 74.07 | (20.93) |



Statistics on guaranteed warrant trade

| Warrant code(*) | Closing rate (VND) | Change (%) | Matched volume | Day to maturity | Price (VND) | Theoretical buying rate (VND) (**) | Difference from closing rate (VND) | Operating price (VND) | Converting rate n:1 | Matured date |
|-----------------|--------------------|------------|----------------|-----------------|-------------|------------------------------------|------------------------------------|-----------------------|---------------------|--------------|
| CACB2201 | 260 | 0.0% | 11,320 | 50 | 25,000 | 48 | (212) | 28,420 | 3.2 | 20/09/2022 |
| CACB2203 | 770 | 8.5% | 7,910 | 79 | 25,000 | 331 | (439) | 26,420 | 2.4 | 19/10/2022 |
| CACB2204 | 1,410 | 2.9% | 7,480 | 98 | 25,000 | 687 | (723) | 26,020 | 1.6 | 07/11/2022 |
| CFPT2201 | 810 | 0.0% | 13,750 | 50 | 84,000 | 373 | (437) | 87,500 | 6.6 | 20/09/2022 |
| CFPT2204 | 1,320 | -1.5% | 21,670 | 128 | 84,000 | 594 | (726) | 87,500 | 8.3 | 07/12/2022 |
| CHDB2201 | 120 | 9.1% | 21,040 | 51 | 24,700 | 16 | (104) | 31,000 | 5.0 | 21/09/2022 |
| CHDB2203 | 20 | 0.0% | 31,580 | 14 | 24,700 | 2 | (18) | 28,890 | 5.0 | 15/08/2022 |
| CHDB2204 | 80 | 0.0% | 1,020 | 56 | 24,700 | 38 | (42) | 31,500 | 2.0 | 26/09/2022 |
| CHDB2205 | 440 | 4.8% | 1,290 | 80 | 24,700 | 171 | (269) | 27,110 | 5.0 | 20/10/2022 |
| CHDB2206 | 370 | 8.8% | 74,390 | 155 | 24,700 | 102 | (268) | 30,000 | 8.0 | 03/01/2023 |
| CHDB2207 | 1,460 | 5.0% | 10 | 128 | 24,700 | 781 | (679) | 24,500 | 3.0 | 07/12/2022 |
| CHDB2208 | 1,200 | 3.5% | 510 | 239 | 24,700 | 693 | (507) | 24,000 | 5.0 | 28/03/2023 |
| CHPG2201 | 50 | 25.0% | 238,370 | 81 | 22,800 | 0 | (50) | 37,570 | 7.6 | 21/10/2022 |
| CHPG2202 | 20 | 0.0% | 29,730 | 51 | 22,800 | 0 | (20) | 40,760 | 7.6 | 21/09/2022 |
| CHPG2203 | 30 | 50.0% | 58,700 | 50 | 22,800 | 0 | (30) | 38,960 | 3.0 | 20/09/2022 |
| CHPG2206 | 30 | 0.0% | 123,200 | 14 | 22,800 | 0 | (30) | 36,980 | 7.6 | 15/08/2022 |
| CHPG2207 | 80 | 33.3% | 570 | 56 | 22,800 | 0 | (80) | 38,960 | 2.3 | 26/09/2022 |
| CHPG2208 | 250 | 19.1% | 85,050 | 67 | 22,800 | 14 | (236) | 30,260 | 3.8 | 07/10/2022 |
| CHPG2209 | 20 | 0.0% | 107,750 | 21 | 22,800 | 0 | (20) | 34,460 | 6.1 | 22/08/2022 |
| CHPG2210 | 80 | 60.0% | 5,320 | 80 | 22,800 | 1 | (79) | 36,140 | 6.1 | 20/10/2022 |
| CHPG2211 | 190 | 35.7% | 62,950 | 79 | 22,800 | 5 | (185) | 33,660 | 3.0 | 19/10/2022 |
| CHPG2212 | 320 | 14.3% | 167,870 | 148 | 22,800 | 84 | (236) | 27,830 | 7.6 | 27/12/2022 |
| CHPG2213 | 950 | 4.4% | 164,770 | 91 | 22,800 | 223 | (727) | 26,480 | 2.3 | 31/10/2022 |
| CHPG2214 | 340 | 21.4% | 157,930 | 155 | 22,800 | 71 | (269) | 28,740 | 7.6 | 03/01/2023 |
| CHPG2215 | 660 | 13.8% | 192,130 | 239 | 22,800 | 273 | (387) | 23,000 | 10.0 | 28/03/2023 |
| CKDH2201 | 70 | 0.0% | 11,490 | 65 | 38,500 | 2 | (68) | 55,990 | 7.3 | 05/10/2022 |
| CKDH2204 | 10 | -50.0% | 360 | 14 | 38,500 | 0 | (10) | 48,460 | 7.3 | 15/08/2022 |
| CKDH2205 | 50 | 25.0% | 4,430 | 56 | 38,500 | 9 | (41) | 52,700 | 2.7 | 26/09/2022 |
| CKDH2206 | 100 | -16.7% | 25,060 | 50 | 38,500 | 14 | (86) | 48,160 | 7.3 | 20/09/2022 |
| CKDH2207 | 650 | 0.0% | 620 | 98 | 38,500 | 224 | (426) | 45,430 | 3.6 | 07/11/2022 |
| CKDH2208 | 2,000 | 1.0% | 1,500 | 128 | 38,500 | 1,068 | (932) | 35,890 | 4.5 | 07/12/2022 |
| CKDH2209 | 1,360 | 0.7% | 6,240 | 239 | 38,500 | 797 | (563) | 36,340 | 7.3 | 28/03/2023 |
| CMBB2201 | 560 | 21.7% | 74,090 | 50 | 26,500 | 198 | (362) | 29,500 | 2.0 | 20/09/2022 |
| CMBB2203 | 140 | 0.0% | 3,450 | 56 | 26,500 | 10 | (130) | 35,500 | 2.0 | 26/09/2022 |
| CMBB2204 | 830 | 22.1% | 20,080 | 98 | 26,500 | 271 | (559) | 31,000 | 2.0 | 07/11/2022 |
| CMBB2205 | 1,180 | 8.3% | 112,080 | 91 | 26,500 | 174 | (1,006) | 32,000 | 2.0 | 31/10/2022 |
| CMBB2206 | 610 | 17.3% | 27,720 | 63 | 26,500 | 456 | (154) | 22,220 | 10.0 | 03/10/2022 |
| CMBB2207 | 680 | 4.6% | 7,840 | 155 | 26,500 | 425 | (255) | 23,460 | 10.0 | 03/01/2023 |
| CMSN2201 | 150 | 0.0% | 26,410 | 51 | 109,400 | 27 | (123) | 140,690 | 16.6 | 21/09/2022 |
| CMSN2202 | 270 | -3.6% | 45,990 | 67 | 109,400 | 307 | 37 | 126,620 | 8.3 | 07/10/2022 |
| CMSN2203 | 70 | -30.0% | 75,860 | 21 | 109,400 | 22 | (48) | 125,860 | 19.9 | 22/08/2022 |
| CMSN2204 | 1,110 | 0.9% | 26,260 | 98 | 109,400 | 728 | (382) | 115,650 | 9.9 | 07/11/2022 |
| CMSN2205 | 880 | -9.3% | 320 | 148 | 109,400 | 530 | (350) | 113,150 | 19.9 | 27/12/2022 |
| CMSN2206 | 550 | -17.9% | 10 | 155 | 109,400 | 250 | (300) | 132,360 | 19.9 | 03/01/2023 |
| CMSN2207 | 1,300 | 0.0% | 0 | 161 | 109,400 | 626 | (674) | 128,060 | 9.9 | 09/01/2023 |
| CMSN2208 | 1,220 | 0.8% | 11,720 | 67 | 109,400 | 725 | (495) | 104,230 | 14.9 | 07/10/2022 |
| CMSN2209 | 1,200 | -3.2% | 30 | 239 | 109,400 | 743 | (457) | 111,410 | 19.9 | 28/03/2023 |
| CMWG2201 | 680 | 13.3% | 13,990 | 50 | 61,300 | 240 | (440) | 66,860 | 5.0 | 20/09/2022 |
| CMWG2203 | 310 | 0.0% | 11,480 | 56 | 61,300 | 102 | (208) | 73,570 | 3.5 | 26/09/2022 |
| CMWG2204 | 560 | -1.8% | 36,730 | 67 | 61,300 | 134 | (426) | 72,080 | 5.0 | 07/10/2022 |
| CMWG2205 | 450 | 7.1% | 265,140 | 98 | 61,300 | 112 | (338) | 77,300 | 5.0 | 07/11/2022 |
| CMWG2206 | 830 | -7.8% | 760 | 161 | 61,300 | 82 | (748) | 88,060 | 5.0 | 09/01/2023 |
| CMWG2207 | 660 | -5.7% | 4,460 | 98 | 61,300 | 139 | (521) | 74,570 | 6.0 | 07/11/2022 |
| CNVL2201 | 120 | -7.7% | 8,030 | 65 | 74,700 | 2 | (118) | 93,980 | 20.0 | 05/10/2022 |

| | | | | | | | | | | |
|----------|-------|--------|--------|-----|---------|-------|-------|---------|------|------------|
| CNVL2202 | 300 | 0.0% | 990 | 14 | 74,700 | 7 | (293) | 80,000 | 16.0 | 15/08/2022 |
| CNVL2203 | 190 | 5.6% | 1,790 | 56 | 74,700 | 6 | (184) | 92,500 | 5.0 | 26/09/2022 |
| CNVL2204 | 150 | 0.0% | 470 | 50 | 74,700 | 10 | (140) | 86,000 | 16.0 | 20/09/2022 |
| CNVL2205 | 660 | 10.0% | 1,100 | 148 | 74,700 | 136 | (524) | 81,890 | 16.0 | 27/12/2022 |
| CNVL2206 | 540 | -12.9% | 2,270 | 155 | 74,700 | 110 | (430) | 84,000 | 16.0 | 03/01/2023 |
| CNVL2207 | 940 | 0.0% | 20 | 161 | 74,700 | 184 | (756) | 84,000 | 10.0 | 09/01/2023 |
| CNVL2208 | 930 | -1.1% | 2,340 | 239 | 74,700 | 258 | (672) | 80,000 | 16.0 | 28/03/2023 |
| CPDR2201 | 100 | -9.1% | 1,030 | 65 | 53,600 | 0 | (100) | 83,080 | 3.7 | 05/10/2022 |
| CPDR2202 | 20 | 0.0% | 8,730 | 14 | 53,600 | 0 | (20) | 67,610 | 11.7 | 15/08/2022 |
| CPDR2203 | 120 | -7.7% | 2,070 | 50 | 53,600 | 10 | (110) | 66,000 | 10.0 | 20/09/2022 |
| CPDR2204 | 480 | -4.0% | 20 | 155 | 53,600 | 182 | (298) | 57,980 | 16.0 | 03/01/2023 |
| CPDR2205 | 760 | -1.3% | 10 | 239 | 53,600 | 389 | (371) | 53,000 | 16.0 | 28/03/2023 |
| CPNJ2201 | 3,010 | 13.6% | 15,450 | 50 | 117,000 | 2,962 | (48) | 94,470 | 7.9 | 20/09/2022 |
| CPNJ2202 | 880 | 18.9% | 21,550 | 63 | 117,000 | 781 | (99) | 99,480 | 24.9 | 03/10/2022 |
| CPNJ2203 | 860 | 10.3% | 24,000 | 155 | 117,000 | 662 | (198) | 109,430 | 24.9 | 03/01/2023 |
| CPNJ2204 | 1,350 | 10.7% | 1,520 | 161 | 117,000 | 475 | (875) | 142,260 | 9.9 | 09/01/2023 |
| CPOW2202 | 280 | -6.7% | 27,980 | 106 | 13,500 | 65 | (215) | 18,000 | 5.0 | 15/11/2022 |
| CPOW2203 | 260 | 4.0% | 56,760 | 35 | 13,500 | 102 | (158) | 15,700 | 2.0 | 05/09/2022 |
| CPOW2204 | 730 | 0.0% | 95,860 | 239 | 13,500 | 419 | (311) | 13,980 | 5.0 | 28/03/2023 |
| CSTB2201 | 210 | 23.5% | 50,330 | 51 | 25,200 | 72 | (138) | 29,890 | 5.0 | 21/09/2022 |
| CSTB2202 | 390 | 18.2% | 36,750 | 50 | 25,200 | 201 | (189) | 29,500 | 2.0 | 20/09/2022 |
| CSTB2205 | 20 | 100.0% | 34,070 | 14 | 25,200 | 0 | (20) | 34,570 | 8.0 | 15/08/2022 |
| CSTB2206 | 100 | -16.7% | 1,360 | 56 | 25,200 | 10 | (90) | 37,500 | 2.0 | 26/09/2022 |
| CSTB2207 | 100 | 25.0% | 48,150 | 21 | 25,200 | 26 | (74) | 28,890 | 5.0 | 22/08/2022 |
| CSTB2208 | 360 | 12.5% | 8,250 | 80 | 25,200 | 126 | (234) | 30,110 | 5.0 | 20/10/2022 |
| CSTB2209 | 640 | 12.3% | 1,350 | 79 | 25,200 | 120 | (520) | 32,000 | 3.0 | 19/10/2022 |
| CSTB2210 | 940 | 13.3% | 14,120 | 98 | 25,200 | 590 | (350) | 28,500 | 2.0 | 07/11/2022 |
| CSTB2211 | 690 | 9.5% | 92,910 | 148 | 25,200 | 487 | (203) | 23,330 | 8.0 | 27/12/2022 |
| CSTB2212 | 1,740 | 7.4% | 66,850 | 91 | 25,200 | 966 | (774) | 26,000 | 2.0 | 31/10/2022 |
| CSTB2213 | 710 | 10.9% | 5,250 | 155 | 25,200 | 422 | (288) | 24,440 | 8.0 | 03/01/2023 |
| CSTB2214 | 2,760 | 8.7% | 20,440 | 161 | 25,200 | 2,106 | (654) | 23,000 | 2.0 | 09/01/2023 |
| CSTB2215 | 1,460 | 8.2% | 83,750 | 239 | 25,200 | 1,062 | (398) | 22,220 | 5.0 | 28/03/2023 |
| CTCB2201 | 70 | -12.5% | 40,620 | 50 | 38,600 | 1 | (69) | 55,000 | 4.0 | 20/09/2022 |
| CTCB2204 | 590 | 7.3% | 7,400 | 67 | 38,600 | 79 | (511) | 45,000 | 5.0 | 07/10/2022 |
| CTCB2205 | 590 | 7.3% | 450 | 79 | 38,600 | 67 | (523) | 46,500 | 5.0 | 19/10/2022 |
| CTCB2206 | 730 | 15.9% | 38,930 | 98 | 38,600 | 248 | (482) | 43,500 | 4.0 | 07/11/2022 |
| CTPB2201 | 90 | 12.5% | 3,360 | 50 | 27,250 | 1 | (89) | 42,000 | 4.0 | 20/09/2022 |
| CTPB2203 | 680 | 11.5% | 27,620 | 88 | 27,250 | 498 | (182) | 23,000 | 10.0 | 28/10/2022 |
| CTPB2204 | 850 | 6.3% | 16,840 | 239 | 27,250 | 567 | (283) | 23,890 | 10.0 | 28/03/2023 |
| CVHM2115 | 20 | 0.0% | 70,800 | 16 | 60,000 | 0 | (20) | 91,330 | 9.7 | 17/08/2022 |
| CVHM2201 | 30 | 0.0% | 13,920 | 51 | 60,000 | 0 | (30) | 85,190 | 15.5 | 21/09/2022 |
| CVHM2202 | 30 | -25.0% | 19,780 | 50 | 60,000 | 0 | (30) | 90,360 | 7.8 | 20/09/2022 |
| CVHM2205 | 20 | 0.0% | 1,960 | 14 | 60,000 | 0 | (20) | 76,650 | 15.5 | 15/08/2022 |
| CVHM2206 | 90 | -18.2% | 1,810 | 56 | 60,000 | 0 | (90) | 83,560 | 4.9 | 26/09/2022 |
| CVHM2207 | 390 | 85.7% | 100 | 79 | 60,000 | 40 | (350) | 70,930 | 7.8 | 19/10/2022 |
| CVHM2208 | 610 | 5.2% | 7,740 | 98 | 60,000 | 135 | (475) | 67,040 | 7.8 | 07/11/2022 |
| CVHM2209 | 400 | -2.4% | 7,960 | 148 | 60,000 | 72 | (328) | 69,980 | 15.5 | 27/12/2022 |
| CVHM2210 | 290 | -3.3% | 52,680 | 155 | 60,000 | 15 | (275) | 80,000 | 16.0 | 03/01/2023 |
| CVHM2211 | 750 | 7.1% | 270 | 239 | 60,000 | 219 | (531) | 65,000 | 16.0 | 28/03/2023 |
| CVIC2201 | 40 | 0.0% | 90 | 51 | 64,700 | 0 | (40) | 103,980 | 16.0 | 21/09/2022 |
| CVIC2202 | 20 | 100.0% | 13,980 | 14 | 64,700 | 0 | (20) | 82,220 | 16.0 | 15/08/2022 |
| CVIC2203 | 210 | -22.2% | 10 | 67 | 64,700 | 2 | (208) | 86,000 | 10.0 | 07/10/2022 |
| CVIC2204 | 20 | -33.3% | 9,320 | 21 | 64,700 | 0 | (20) | 83,330 | 16.0 | 22/08/2022 |
| CVIC2205 | 150 | -16.7% | 66,340 | 80 | 64,700 | 2 | (148) | 86,670 | 16.0 | 20/10/2022 |
| CVIC2206 | 300 | 3.5% | 2,020 | 49 | 64,700 | 2 | (298) | 82,500 | 10.0 | 19/09/2022 |
| CVJC2201 | 10 | 0.0% | 1,040 | 14 | 127,100 | 0 | (10) | 160,000 | 20.0 | 15/08/2022 |
| CVJC2202 | 130 | 8.3% | 25,750 | 50 | 127,100 | 4 | (126) | 156,790 | 20.0 | 20/09/2022 |
| CVJC2203 | 980 | -2.0% | 4,080 | 148 | 127,100 | 373 | (607) | 131,130 | 20.0 | 27/12/2022 |
| CVJC2204 | 1,270 | 5.8% | 120 | 239 | 127,100 | 453 | (817) | 133,980 | 20.0 | 28/03/2023 |
| CVNM2201 | 210 | 5.0% | 21,980 | 51 | 73,500 | 11 | (199) | 85,600 | 15.2 | 21/09/2022 |

| | | | | | | | | | | |
|----------|-------|-------|--------|-----|--------|-----|-------|--------|------|------------|
| CVNM2203 | 70 | 0.0% | 2,330 | 14 | 73,500 | 8 | (62) | 78,450 | 19.3 | 15/08/2022 |
| CVNM2204 | 750 | 1.4% | 44,750 | 67 | 73,500 | 514 | (236) | 70,600 | 9.7 | 07/10/2022 |
| CVNM2205 | 480 | -9.4% | 600 | 80 | 73,500 | 132 | (348) | 77,370 | 15.5 | 20/10/2022 |
| CVNM2206 | 820 | 1.2% | 330 | 79 | 73,500 | 233 | (587) | 77,370 | 8.7 | 19/10/2022 |
| CVNM2207 | 1,170 | 0.9% | 240 | 239 | 73,500 | 602 | (568) | 68,670 | 15.5 | 28/03/2023 |
| CVPB2201 | 130 | 8.3% | 1,640 | 50 | 29,100 | 12 | (118) | 37,000 | 5.0 | 20/09/2022 |
| CVPB2204 | 420 | -4.6% | 970 | 106 | 29,100 | 99 | (321) | 30,890 | 16.0 | 15/11/2022 |
| CVPB2205 | 210 | 16.7% | 980 | 49 | 29,100 | 11 | (199) | 37,500 | 4.0 | 19/09/2022 |
| CVPB2206 | 620 | 12.7% | 8,510 | 98 | 29,100 | 107 | (513) | 38,000 | 2.0 | 07/11/2022 |
| CVRE2201 | 130 | -7.1% | 11,240 | 50 | 29,000 | 74 | (56) | 34,000 | 4.0 | 20/09/2022 |
| CVRE2203 | 20 | 0.0% | 8,560 | 14 | 29,000 | 3 | (17) | 33,980 | 4.0 | 15/08/2022 |
| CVRE2204 | 580 | 7.4% | 2,600 | 67 | 29,000 | 128 | (452) | 33,000 | 5.0 | 07/10/2022 |
| CVRE2205 | 120 | 50.0% | 2,820 | 21 | 29,000 | 35 | (85) | 32,220 | 5.0 | 22/08/2022 |
| CVRE2206 | 330 | 3.1% | 1,160 | 80 | 29,000 | 76 | (254) | 35,560 | 5.0 | 20/10/2022 |
| CVRE2207 | 250 | 19.1% | 44,060 | 80 | 29,000 | 90 | (160) | 33,330 | 8.0 | 20/10/2022 |
| CVRE2208 | 1,150 | 23.7% | 18,240 | 98 | 29,000 | 626 | (524) | 32,000 | 2.0 | 07/11/2022 |
| CVRE2209 | 520 | 18.2% | 39,990 | 148 | 29,000 | 272 | (248) | 30,890 | 8.0 | 27/12/2022 |
| CVRE2210 | 1,360 | 12.4% | 950 | 128 | 29,000 | 710 | (650) | 28,800 | 4.0 | 07/12/2022 |
| CVRE2211 | 860 | 11.7% | 80,920 | 239 | 29,000 | 483 | (377) | 28,890 | 8.0 | 28/03/2023 |

(**) PHS evaluates in Black-Scholes model

LIST OF CODES ANALYZED

| Ticker | Exchange | Market price | Reasonable price * | Report date | 2022F EAT (bil. VND) | PE forward | PB forward |
|---------------------------|----------|--------------|--------------------|-------------|----------------------|------------|------------|
| PVT (New) | HOSE | 19,600 | 32,000 | 25/07/2022 | 996 | 10.4 | 1.5 |
| OCB (New) | HOSE | 18,100 | 33,000 | 11/07/2022 | 4,892 | 9.2 | 1.7 |
| VPB (New) | HOSE | 29,100 | 53,200 | 11/07/2022 | 19,558 | 12.3 | 2.4 |
| TCB (New) | HOSE | 38,600 | 65,700 | 11/07/2022 | 22,735 | 10.2 | 2.0 |
| MBB (New) | HOSE | 26,500 | 36,800 | 11/07/2022 | 17,241 | 8.1 | 1.8 |
| VCB | HOSE | 77,000 | 126,500 | 11/07/2022 | 26,600 | 17.6 | 3.6 |
| BID | HOSE | 39,000 | 43,900 | 11/07/2022 | 14,485 | 15.3 | 2.2 |
| CTG | HOSE | 28,700 | 37,100 | 11/07/2022 | 15,100 | 11.8 | 1.7 |
| ACB | HOSE | 25,000 | 36,800 | 11/07/2022 | 17,241 | 8.0 | 1.8 |
| HDB | HOSE | 24,700 | 36,100 | 11/07/2022 | 8,189 | 9.9 | 1.9 |
| TPB | HOSE | 27,250 | 36,300 | 11/07/2022 | 5,828 | 9.9 | 1.8 |
| VIB | HOSE | 26,650 | 38,200 | 11/07/2022 | 7,778 | 10.3 | 2.5 |
| LPB | HOSE | 15,750 | 20,100 | 11/07/2022 | 3,730 | 8.1 | 1.3 |
| MSB | HOSE | 18,700 | 29,500 | 11/07/2022 | 4,858 | 9.3 | 1.4 |
| BVH | HOSE | 59,200 | 82,700 | 11/07/2022 | 2,920 | 22.1 | 2.6 |
| PVI | HNX | 45,600 | 59,680 | 11/07/2022 | 1,031 | 13.6 | 1.7 |
| BMI | HOSE | 28,150 | 42,000 | 11/07/2022 | 267 | 14.3 | 1.5 |
| KBC | HOSE | 39,550 | 55,000 | 11/07/2022 | 4,503 | 13.8 | 1.7 |
| GVR | HOSE | 24,700 | 32,100 | 11/07/2022 | 5,812 | 27.6 | 2.3 |
| LHG | HOSE | 36,800 | 88,000 | 11/07/2022 | 599 | 7.3 | 2.3 |
| POW | HOSE | 13,500 | 15,400 | 11/07/2022 | 2,913 | 14.0 | 1.0 |
| PPC | HOSE | 17,550 | 21,000 | 11/07/2022 | 320 | 14.5 | 1.4 |
| NT2 | HOSE | 26,200 | 27,500 | 11/07/2022 | 692 | 11.4 | 1.8 |
| GEG | HOSE | 21,550 | 22,400 | 11/07/2022 | 528 | 16.2 | 1.7 |
| REE | HOSE | 76,000 | 84,700 | 11/07/2022 | 2,873 | 12.4 | 1.3 |
| GMD | HOSE | 52,500 | 61,600 | 11/07/2022 | 819 | 22.7 | 2.6 |
| FPT | HOSE | 84,000 | 125,100 | 11/07/2022 | 6,053 | 32.2 | 6.5 |
| CTR | HOSE | 68,000 | 84,500 | 11/07/2022 | 394 | 24.5 | 6.2 |
| HPG | HOSE | 22,800 | 45,400 | 11/07/2022 | 27,883 | 10.6 | 2.4 |
| HSG | HOSE | 18,100 | 23,400 | 11/07/2022 | 2,842 | 4.1 | 1.1 |
| SMC | HOSE | 18,150 | 25,400 | 11/07/2022 | 996 | 1.6 | 0.7 |
| NKG | HOSE | 19,000 | 22,500 | 11/07/2022 | 1,373 | 3.6 | 0.7 |

| Ticker | Exchange | Market price | Reasonable price * | Report date | 2022F EAT (bil. VND) | PE forward | PB forward |
|---------------------|----------|--------------|--------------------|-------------|----------------------|------------|------------|
| BMP | HOSE | 61,500 | 62,500 | 11/07/2022 | 422 | 12.1 | 2.1 |
| CTD | HOSE | 62,000 | 54,100 | 11/07/2022 | 99 | 6.0 | 0.4 |
| TNH | HOSE | 44,850 | 50,000 | 11/07/2022 | 154 | 13.5 | 2.3 |
| TRA | HOSE | 88,500 | 124,200 | 11/07/2022 | 296 | 17.4 | 3.4 |
| IMP | HOSE | 66,500 | 70,200 | 11/07/2022 | 230 | 20.4 | 2.4 |
| DHG | HOSE | 92,000 | 118,500 | 11/07/2022 | 813 | 19.1 | 3.8 |
| STK | HOSE | 50,800 | 76,200 | 11/07/2022 | 300 | 18.0 | 3.4 |
| TCM | HOSE | 44,300 | 64,400 | 11/07/2022 | 264 | 20.0 | 3.0 |
| VRE | HOSE | 29,000 | 40,720 | 11/07/2022 | 2,604 | 35.6 | 2.9 |
| KDH | HOSE | 38,500 | 55,700 | 11/07/2022 | 1,363 | 25.4 | 3.4 |
| NLG | HOSE | 41,250 | 64,800 | 11/07/2022 | 1,386 | 16.6 | 2.4 |
| VHM | HOSE | 60,000 | 110,600 | 11/07/2022 | 33,671 | 14.3 | 3.3 |
| MSN | HOSE | 109,400 | 164,800 | 11/07/2022 | 8,969 | 28.6 | 5.8 |
| VNM | HOSE | 73,500 | 100,900 | 11/07/2022 | 9,703 | 22.0 | 5.9 |
| KDC | HOSE | 70,000 | 65,000 | 11/07/2022 | 709 | 24.0 | 2.8 |
| SAB | HOSE | 183,000 | 169,500 | 11/07/2022 | 4,398 | 26.0 | 4.7 |
| DBC | HOSE | 25,300 | 29,200 | 11/07/2022 | 473 | 14.2 | 1.0 |
| BAF | HOSE | 32,350 | 41,300 | 11/07/2022 | 405 | 14.6 | 2.4 |
| MPC | HOSE | 42,597 | 53,400 | 11/07/2022 | 1,225 | 9.2 | 1.7 |
| FMC | HOSE | 49,500 | 80,700 | 11/07/2022 | 385 | 13.7 | 3.3 |
| ANV | HOSE | 45,000 | 50,300 | 11/07/2022 | 258 | 25.8 | 2.7 |
| VHC | HOSE | 82,200 | 120,600 | 11/07/2022 | 1,644 | 13.5 | 3.1 |
| MWG | HOSE | 61,300 | 90,800 | 11/07/2022 | 6,512 | 20.4 | 5.1 |
| PNJ | HOSE | 117,000 | 138,700 | 11/07/2022 | 1,736 | 19.4 | 4.6 |
| FRT | HOSE | 74,000 | 115,000 | 11/07/2022 | 693 | 19.7 | 6.0 |
| DGW | HOSE | 60,900 | 82,000 | 11/07/2022 | 805 | 16.7 | 5.4 |
| PET | HOSE | 34,750 | 45,400 | 11/07/2022 | 303 | 13.9 | 2.3 |
| BSR | UPCOM | 24,120 | 32,300 | 11/07/2022 | 9,749 | 10.2 | 2.1 |
| PLX | HOSE | 41,800 | 53,900 | 11/07/2022 | 3,088 | 15.6 | 2.6 |
| GAS | HOSE | 107,900 | 134,300 | 11/07/2022 | 16,312 | 15.9 | 4.1 |

Source: PHFM

* Reasonable price is not included with operating rights after report date

Analyst Certification

The report is made by Pham Quang Chuong, analyst – Phu Hung Fund Management Joint Stock Company. Each research analyst(s), strategist(s) or research associate(s) responsible for the preparation and content of all or any identified portion of this research report hereby certifies that, with respect to each issuer or security or any identified portion of the report with respect to each issuer or security that the research analyst, strategist or research associate covers in this research report, all of the views expressed by that research analyst, strategist or research associate in this research report accurately reflect their personal views about those issuer(s) or securities. Each research analyst(s), strategist(s) or research associate(s) also certify that no part of their compensation was, is, or will be, directly or indirectly, related to the specific recommendation(s) or view(s) expressed by that research analyst, strategist or research associate in this research report.

Ratings Definition

Buy = higher than domestic market by over 10%

Hold = similar to domestic market at the rate of +10% ~ -10%

Sell = lower than domestic market by below 10%

No rating = the code is not rated in Phu Hung or not yet listed

The performance is determined by total recollection in 12 months (including dividend).

Analyst Certification

This information has been compiled from sources we believe to be reliable, but we do not hold ourselves responsible for its completeness or accuracy. It is not an offer to sell or solicitation of an offer to buy any securities. Phu Hung Securities and its affiliates and their officers and employees may or may not have a position in or with respect to the securities mentioned herein. Phu Hung Securities (or one of its affiliates) may from time to time perform investment banking or other services or solicit investment banking or other business for any company mentioned in this report. All opinions and estimates included in this report constitute our judgment as of this date and are subject to change without notice.

© Phu Hung Fund Management Joint Stock Company

21st Floor, Phu My Hung Building, 08 Hoang Van Thai St, Tan Phu Ward. District 7, HCM.

Phone: (84-28) 5413 7991

Web: www.phfm.vn