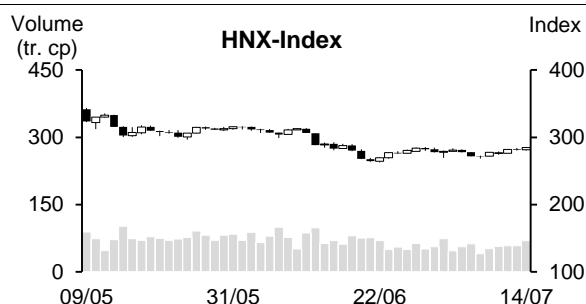
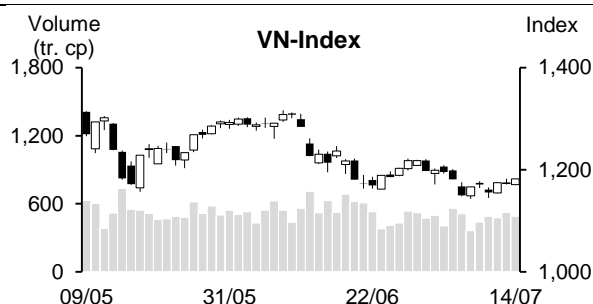


| 14/07/2022                          | HOSE             |               | VN30            |                | HNX             |               |
|-------------------------------------|------------------|---------------|-----------------|----------------|-----------------|---------------|
|                                     | Value            | Change %      | Value           | Change %       | Value           | Change %      |
| Closing rate                        | 1,182.17         | 0.70%         | 1,221.94        | 0.41%          | 284.75          | 1.21%         |
| <b>Total volume (mil. shares)</b>   | <b>534.74</b>    | <b>-5.19%</b> | <b>116.16</b>   | <b>-8.96%</b>  | <b>76.28</b>    | <b>16.05%</b> |
| <b>Matched volume (mil. shares)</b> | <b>490.51</b>    | <b>-6.10%</b> | <b>106.76</b>   | <b>-8.89%</b>  | <b>69.34</b>    | <b>20.09%</b> |
| 20-session average (mil. shares)    | 496.86           | -1.28%        | 127.20          | -16.07%        | 59.90           | 15.76%        |
| <b>Total value (bil dong)</b>       | <b>10,967.88</b> | <b>-5.00%</b> | <b>3,591.16</b> | <b>-10.71%</b> | <b>1,503.02</b> | <b>16.86%</b> |
| <b>Matched value (bil dong)</b>     | <b>9,919.14</b>  | <b>-5.83%</b> | <b>3,114.92</b> | <b>-14.27%</b> | <b>1,312.49</b> | <b>16.50%</b> |
| 20-session average (bil dong)       | 10,761.58        | -7.83%        | 3,997.28        | -22.07%        | 1,150.02        | 14.13%        |
|                                     | Weight %         |               | Weight %        |                | Weight %        |               |
| <b>Number of gainers</b>            | 241              | 47%           | 21              | 70%            | 112             | 48%           |
| <b>Number of droppers</b>           | 185              | 36%           | 6               | 20%            | 66              | 28%           |
| <b>Stand still codes</b>            | 86               | 17%           | 3               | 10%            | 57              | 24%           |



### REMARKABLE POINTS ON THE MARKET

The market recovered again on Thursday. The information on record inflation for America last night didn't see much impact on Asia market in general and Vietnam stock market in particular at the opening. VN-Index only struggled below reference with correcting pressure from pillar codes like MWG, VIC, and VHM. On the contrary, petro supported the index from dropping too strongly. In the afternoon, the market got more excited with the focus on the gain of securities as investors reacted to the information of the adjustment of completing time for stock payment with T+2 cycle. Besides, some other groups like banking, real estate, fertilizer, and industrial park also gained positively.

### TECHNICAL POINT OF VIEW

In technical term, VN-Index gained again. The volume stayed above 10-session average, showing that the cash flow is joining in. Not just that, the index stayed above MA5, and the price line differentiated positively with RSI, showing better chance of creating bottom. However, the index still closed below MA20 and -DI was above +DI, showing that short-term dropping pressure is still there, but with MACD increasing to above Signal that maintained buying sign, the index might surpass resistant level around 1,184 points (MA20) and move to challenge close target around 1,231 points (MA50). For HNX, HNX-Index saw similar situation. It gained again and stayed above MA20, and MA5 differentiated positively from MA20, showing that short-term recovering trend is still there, the index might move to challenge 296 points (MA50). In general, the market might create bottom and gain. Therefore, investors should consider raising a small weight, with priority on strong codes with positive growth prospect in Q2 results.

**Recommending code:** CMX (Buy)

**Observing code:** HCM, CTG, VTD

(Details in page 2)

## RECOMMENDING CODES AS PER TECHNICAL SIGNS

### Codes of the day

| No | Ticker | Recommend | Recommended date | Current Price | Operation Price | Current profit/loss | Target Price | Expected profit | Cut loss price | Expected Loss | Note                                   |
|----|--------|-----------|------------------|---------------|-----------------|---------------------|--------------|-----------------|----------------|---------------|--|
| 1  | CMX    | Buy       | 15/07/22         | 16            | 16              | 0.0%                | 18.3         | 14.4%           | 15.1           | -5.6%         | Sign of creating bottom and might gain |

| No | Ticker | Recommend      | Recommended date | Current Price | Resistance | Technical sign   |
|----|--------|----------------|------------------|---------------|------------|--|
| 1  | HCM    | Observe to buy | 15/07/22         | 24.75         | 33-34      | Break collecting level with high vol. -> might gain further to above the neckline around 25 of the Two-bottom model  |
| 2  | CTG    | Observe to buy | 15/07/22         | 27            | 30   32-33 | Two positive recovering candles with higher vol. after a low vol. correction -> might gain further to above the neckline around 27.5 of the Two-bottom model |
| 3  | VTD    | Observe to buy | 15/07/22         | 17.8          | 21   23.5  | Recovering sign to cut up to MA lines with slightly higher vol. after a low vol. correction -> to above the neckline around 18.3 of the Two-bottom model     |

### List of recommended codes

| No | Ticker | Recommend | Recommended date | Current Price | Operation Price | Current profit/loss | Target Price | Expected profit | Cut loss price | Expected Loss | Note |
|----|--------|-----------|------------------|---------------|-----------------|---------------------|--------------|-----------------|----------------|---------------|------|
| 1  | SAB    | Buy       | 22/06/22         | 154.9         | 155             | -0.1%               | 172          | 11.0%           | 149            | -3.9%         |      |
| 2  | VGI    | Hold      | 07/07/22         | 31.14         | 24.6            | 26.6%               | 32.8         | 33.3%           | 23.2           | -5.7%         |      |
| 3  | TCB    | Buy       | 08/07/22         | 36.0          | 37.8            | -4.9%               | 42.7         | 13.0%           | 35.5           | -6%           |      |
| 4  | BVH    | Buy       | 12/07/22         | 57.9          | 54.6            | 6.0%                | 61           | 11.7%           | 52.5           | -4%           |      |
| 5  | HPG    | Buy       | 13/07/22         | 22.2          | 22.3            | -0.4%               | 25.3         | 13.5%           | 21.3           | -4%           |      |
| 6  | PLX    | Buy       | 13/07/22         | 40.1          | 40.4            | -0.7%               | 47           | 16%             | 38.2           | -5%           |      |

## DAILY NEWS

### Domestic news

#### **Estimate from August 29, stock investors can trade in day earlier**

Vietnam Stock Depository (VSD) has sent a letter to depository members on preparing the system to apply the adjustment of completing time for stock payment with T+2 cycle.

In detail, according to the draft of the Policy on stock trading compensating and payment that VSD is submitting to SSC for consideration and approval, suggesting applying time is from Monday, August 29, 2022, VSD announced some related contents so that depository members can acknowledge and be active for preparing the system and procedures as follow:

The time VSD completes stock payment and payment bank completes the payment on T+2 day from 11:00 – 11:30 (if a member has a payment shortage, latest completing time is 12:00).

Depostory member is responsible for distributing money and stock for customers immediately after VSD completes the stock payment and payment bank completes the cash payment to ensure that investors can trade before closing time.

#### **Shrimp export: orders increased strongly but processing companies have material shortage**

According to Mr. Nguyen Hoai Nam, Vice Secretary of VASEP, shrimp export in 6 months is 2.3 billion USD, up by 33% YoY, accounting 40% total aqua products export.

General Department of Sea products sets 2022 shrimp production target at 1 million tons, export value at over 4 billion USD.

However, this year, brackish water in Mekong Delta became fresh earlier than usual, causing problems for brackish shrimp farming, with more cases of shrimp diseases, so shrimp processing experiences a partly material shortage. At the moment, common material satisfaction rate in shrimp companies is only 2/3, even less at only 1/2 in some days.

However, some specialists stated that the shrimp shortage is a short-term problem for companies.

Source: Cafef, VnEconomy

## Listing Company News

### **Vinh Hoan export value to America dropped strongly, to China increased in June**

Vinh Hoan (HoSE: VHC) announced June total revenue at 1,063 billion, up by 43% YoY, but down by 30% MoM.

Comparing to same period, export revenue to America increased by 11% but down strongly by 59% MoM to 330 billion. Meanwhile, China market revenue is 159 billion, up by 46% YoY and 19% MoM.

In 6 months, revenue is 7,495 billion, up by 83% YoY.

### **Not selling rubber garden, Phuoc Hoa Rubber parent company profit in Q2 dropped by over 76%**

Phuoc Hoa Rubber (HoSE: PHR) has released Q2 finance statements with net revenue of 239 billion, down by 31.6% YoY. Cost dropped by nearly 30%, less than revenue drop, so gross margin dropped from 9.3% to 7%.

Finance revenue dropped by 28% to 10.7 billion. Finance and selling expense increased by 49.1% and 33.1% while management expense dropped by 62.3% to 11.4 billion. Other profit dropped from 16 billion to 810 million since there is not income from selling rubber trees.

As the result, Phuoc Hoa Rubber parent company EAT is 8.7 billion, down by 76.1% YoY.

In 6 months, parent company revenue is 541.5 billion, down by 8.3% YoY. In which, selling revenue dropped by 14.6% to 373.6 billion. However, EAT still increased by 328.3% to 249 billion since there is a compensation amount of 286 billion for VSIP III industrial park project in Q1.

In 2022, Phuoc Hoa Rubber sets parent company total revenue target at 2,252 billion and EAT at 744 billion, up by 26% and 2.2 times YoY. So after 6 months, the company completed 24% revenue and 33.5% profit targets.

### **EVNGENCO 3 parent company revenue in 6 months is 22,176 billion, up by 20%**

EVNGENCO3 (HoSE: PGV) stated that power generation in June is 24.5 billion kWh, up by 2.5% YoY. Peak generation in the system set a new record at 45,528 MW on June 21.

EVNGENCO3 combined power generation in June is 2,603 million kWh, down by 5%, reaching 84% month target. In 6 months, the generation is 15,831 million kWh, same with same period last year, reaching 50% year target. In which, parent company generation is 13,999 million kWh, subsidiary and associated companies' is 1,832 million kWh.

Parent company revenue is 22,176 billion, up by 20% YoY, reaching 50.3% year target.

In July, EVNGENCO3 sets power generation target at 3,191 million kWh combined, including 2,950 million kWh in parent company, and 241 million kWh in subsidiary and associated companies.

Source: NDH

**MARKET STATISTICS****Statistics on matching trade****TOP 5 IMPACTING GAINERS**

| HOSE   |                  |             |             |
|--------|------------------|-------------|-------------|
| Ticker | Closing<br>(VND) | Change<br>% | Impact<br>% |
| GAS    | 98,800           | 2.60%       | 0.10%       |
| VCB    | 72,400           | 0.84%       | 0.06%       |
| BCM    | 63,600           | 4.26%       | 0.06%       |
| GVR    | 23,200           | 2.88%       | 0.06%       |
| CTG    | 27,000           | 1.69%       | 0.05%       |

| HNX    |                  |             |             |
|--------|------------------|-------------|-------------|
| Ticker | Closing<br>(VND) | Change<br>% | Impact<br>% |
| SHS    | 15,700           | 7.53%       | 0.22%       |
| IDC    | 58,200           | 3.01%       | 0.17%       |
| HUT    | 28,600           | 5.54%       | 0.16%       |
| MBS    | 20,000           | 9.89%       | 0.15%       |
| IPA    | 20,700           | 9.52%       | 0.12%       |

**TOP 5 IMPACTING DROPPERS**

| HOSE   |                  |             |             |
|--------|------------------|-------------|-------------|
| Ticker | Closing<br>(VND) | Change<br>% | Impact<br>% |
| MWG    | 62,600           | -1.57%      | -0.03%      |
| HPG    | 22,200           | -0.45%      | -0.01%      |
| TCB    | 35,950           | -0.42%      | -0.01%      |
| VRE    | 26,050           | -0.76%      | -0.01%      |
| ITA    | 7,340            | -4.80%      | -0.01%      |

| HNX    |                  |             |             |
|--------|------------------|-------------|-------------|
| Ticker | Closing<br>(VND) | Change<br>% | Impact<br>% |
| PTI    | 59,400           | -8.62%      | -0.14%      |
| KSF    | 83,400           | -0.71%      | -0.05%      |
| HHC    | 89,100           | -9.91%      | -0.05%      |
| EVS    | 26,600           | -5.00%      | -0.04%      |
| VCS    | 72,500           | -0.68%      | -0.02%      |

**TOP 5 IN MATCHING VOLUME**

| HOSE   |                  |             |                   |
|--------|------------------|-------------|-------------------|
| Ticker | Closing<br>(VND) | Change<br>% | Volume<br>(share) |
| VND    | 19,300           | 4.32%       | 30,892,100        |
| HAG    | 10,900           | -0.91%      | 23,597,200        |
| SSI    | 21,500           | 3.86%       | 23,495,100        |
| HNG    | 6,220            | 3.84%       | 20,199,700        |
| ITA    | 7,340            | -4.80%      | 14,182,600        |

| HNX    |                  |             |                   |
|--------|------------------|-------------|-------------------|
| Ticker | Closing<br>(VND) | Change<br>% | Volume<br>(share) |
| SHS    | 15,700           | 7.53%       | 18,434,609        |
| PVS    | 23,700           | 0.00%       | 4,900,038         |
| HUT    | 28,600           | 5.54%       | 4,552,195         |
| CEO    | 29,300           | 1.74%       | 4,373,031         |
| IDC    | 58,200           | 3.01%       | 2,995,660         |

**TOP 5 IN MATCHING VALUE**

| HOSE   |                  |             |                     |
|--------|------------------|-------------|---------------------|
| Ticker | Closing<br>(VND) | Change<br>% | Value<br>(bil. VND) |
| VND    | 19,300           | 4.32%       | 580.6               |
| SSI    | 21,500           | 3.86%       | 494.1               |
| DIG    | 42,400           | 1.92%       | 330.6               |
| STB    | 23,300           | 1.08%       | 296.7               |
| HPG    | 22,200           | -0.45%      | 278.6               |

| HNX    |                  |             |                     |
|--------|------------------|-------------|---------------------|
| Ticker | Closing<br>(VND) | Change<br>% | Value<br>(bil. VND) |
| SHS    | 15,700           | 7.53%       | 278.0               |
| IDC    | 58,200           | 3.01%       | 172.5               |
| HUT    | 28,600           | 5.54%       | 128.2               |
| CEO    | 29,300           | 1.74%       | 127.4               |
| PVS    | 23,700           | 0.00%       | 117.2               |

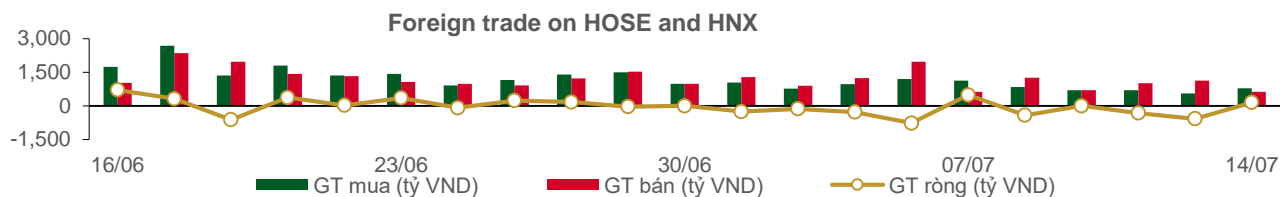
**Statistics on agreement trades****TOP 5 IN AGREEMENT TRADES**

| HOSE     |                           |                               |
|----------|---------------------------|-------------------------------|
| Ticker   | Agreement vol.<br>(share) | Agreement value<br>(bil. VND) |
| NVL      | 1,935,000                 | 142.42                        |
| EIB      | 3,876,200                 | 117.60                        |
| FPT      | 1,312,200                 | 109.12                        |
| FUEKIV30 | 8,000,000                 | 63.99                         |
| SHB      | 4,005,000                 | 58.43                         |

| HNX    |                           |                               |
|--------|---------------------------|-------------------------------|
| Ticker | Agreement vol.<br>(share) | Agreement value<br>(bil. VND) |
| SJE    | 3,195,000                 | 95.85                         |
| HUT    | 1,696,200                 | 45.83                         |
| GKM    | 500,000                   | 22.84                         |
| BAB    | 1,250,000                 | 21.25                         |
| NRC    | 280,000                   | 3.58                          |

## Statistics on foreign investors' trade

| Exchange     | Buying vol.<br>(mil. share) | Buying value<br>(bil. VND) | Selling vol.<br>(mil. share) | Selling value<br>(bil. VND) | Net selling/<br>buying value<br>(mil. share) | Net selling/<br>buying value<br>(bil. VND) |
|--------------|-----------------------------|----------------------------|------------------------------|-----------------------------|--|--|
| HOSE         | 35.27                       | 773.33                     | 32.23                        | 625.41                      | 3.04   | 147.92                                     |
| HNX          | 0.35                        | 16.27                      | 0.52                         | 7.83                        | (0.18)                                       | 8.44                                       |
| <b>Total</b> | <b>35.61</b>                | <b>789.60</b>              | <b>32.75</b>                 | <b>633.24</b>               | <b>2.86</b>                                  | <b>156.36</b>                              |



### TOP 5 BOUGHT-IN

| HOSE     |                  |                        |                            | HNX    |                  |                        |                            |
|----------|------------------|------------------------|----------------------------|--------|------------------|------------------------|----------------------------|
| Ticker   | Closing<br>(VND) | Buying vol.<br>(share) | Buying value<br>(bil. VND) | Ticker | Closing<br>(VND) | Buying vol.<br>(share) | Buying value<br>(bil. VND) |
| FPT      | 82,800           | 1,385,400              | 115.18                     | IDC    | 58,200           | 253,900                | 14.66                      |
| MWG      | 62,600           | 1,215,700              | 76.26                      | PVS    | 23,700           | 20,000                 | 0.48                       |
| FUEKIV30 | 7,940            | 8,025,100              | 64.19                      | HUT    | 28,600           | 14,100                 | 0.40                       |
| VND      | 19,300           | 2,020,800              | 38.49                      | SD5    | 9,200            | 12,500                 | 0.12                       |
| VNM      | 72,400           | 513,200                | 37.26                      | PVG    | 10,000           | 10,000                 | 0.10                       |

### TOP 5 SOLD-OUT

| HOSE     |                  |                         |                             | HNX    |                  |                         |                             |
|----------|------------------|-------------------------|-----------------------------|--------|------------------|-------------------------|-----------------------------|
| Ticker   | Closing<br>(VND) | Selling vol.<br>(share) | Selling value<br>(bil. VND) | Ticker | Closing<br>(VND) | Selling vol.<br>(share) | Selling value<br>(bil. VND) |
| FPT      | 82,800           | 1,317,300               | 109.55                      | SHS    | 15,700           | 490,700                 | 7.32                        |
| FUEKIV30 | 7,940            | 8,027,100               | 64.21                       | PVI    | 44,500           | 3,600                   | 0.16                        |
| MWG      | 62,600           | 657,400                 | 41.18                       | APS    | 15,800           | 10,000                  | 0.15                        |
| VND      | 19,300           | 2,073,100               | 38.87                       | VGS    | 17,900           | 3,000                   | 0.05                        |
| E1VFN30  | 20,690           | 1,621,800               | 33.27                       | IDC    | 58,200           | 500                     | 0.03                        |

### TOP 5 NET BUYING

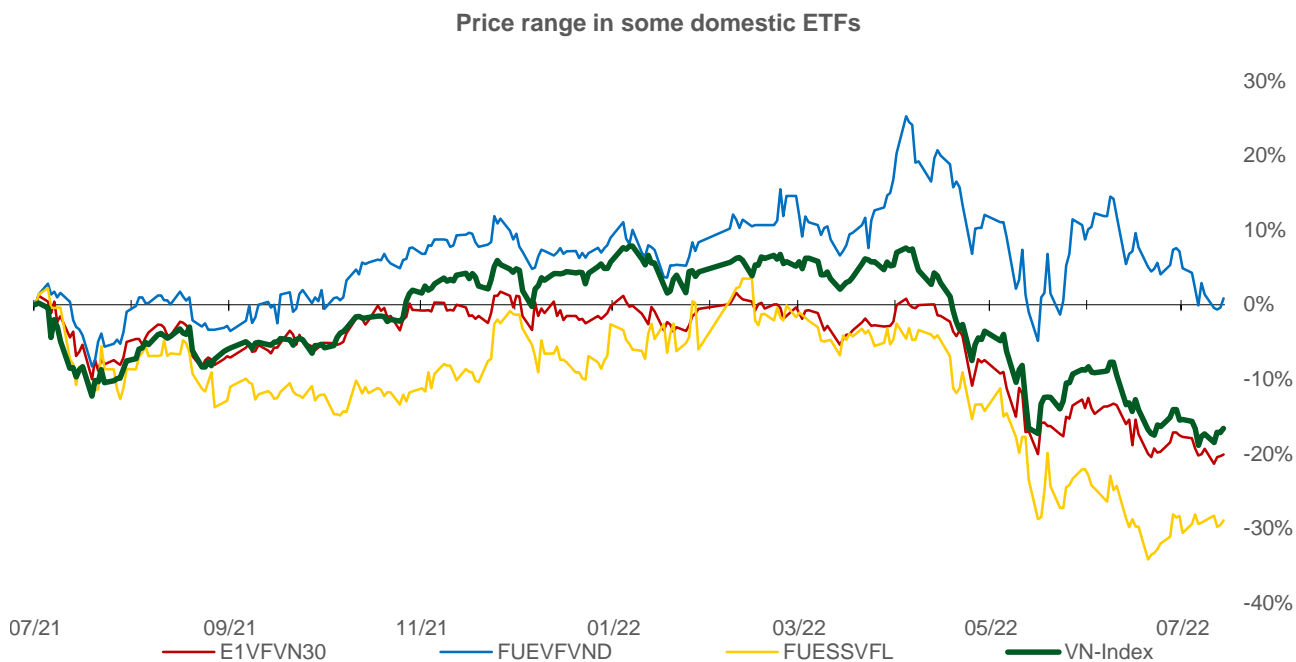
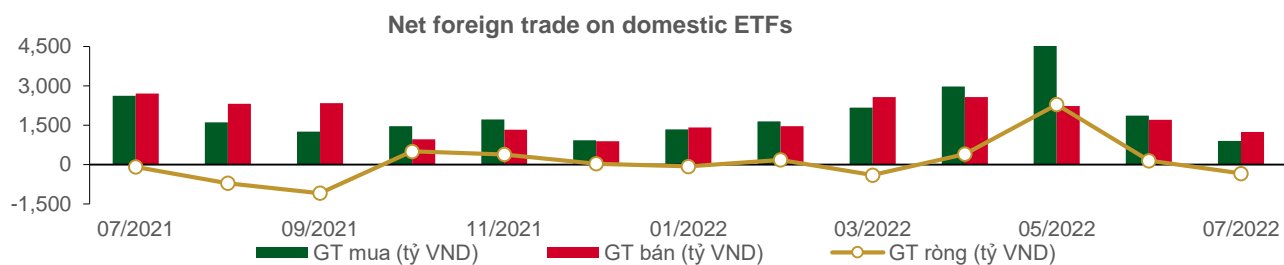
| HOSE   |                  |                     |                        | HNX    |                  |                     |                        |
|--------|------------------|---------------------|------------------------|--------|------------------|---------------------|------------------------|
| Ticker | Closing<br>(VND) | Net vol.<br>(share) | Net value<br>(bil VND) | Ticker | Closing<br>(VND) | Net vol.<br>(share) | Net value<br>(bil VND) |
| MWG    | 62,600           | 558,300             | 35.07                  | IDC    | 58,200           | 253,400             | 14.63                  |
| STB    | 23,300           | 1,204,800           | 27.77                  | PVS    | 23,700           | 20,000              | 0.48                   |
| CTG    | 27,000           | 952,400             | 25.69                  | HUT    | 28,600           | 14,100              | 0.40                   |
| GAS    | 98,800           | 224,300             | 22.07                  | SD5    | 9,200            | 12,500              | 0.12                   |
| HPG    | 22,200           | 876,600             | 19.57                  | PVG    | 10,000           | 10,000              | 0.10                   |

### TOP 5 NET SELLING

| HOSE    |                  |                     |                        | HNX    |                  |                     |                        |
|---------|------------------|---------------------|------------------------|--------|------------------|---------------------|------------------------|
| Ticker  | Closing<br>(VND) | Net vol.<br>(share) | Net value<br>(bil VND) | Ticker | Closing<br>(VND) | Net vol.<br>(share) | Net value<br>(bil VND) |
| HDB     | 23,700           | (780,500)           | (18.30)                | SHS    | 15,700           | (488,200)           | (7.28)                 |
| SSI     | 21,500           | (782,600)           | (15.98)                | APS    | 15,800           | (10,000)            | (0.15)                 |
| VHC     | 80,000           | (162,500)           | (12.74)                | PVI    | 44,500           | (2,500)             | (0.11)                 |
| E1VFN30 | 20,690           | (597,600)           | (12.27)                | WSS    | 7,900            | (3,000)             | (0.02)                 |
| VHM     | 60,100           | (175,400)           | (10.52)                | VIG    | 7,200            | (3,000)             | (0.02)                 |

## Statistics on domestic ETF share trade

| PRICE        |             |            |                   |                 | FOREIGN TRADE |                  |                   |                     |
|--------------|-------------|------------|-------------------|-----------------|---------------|------------------|-------------------|---------------------|
| Ticker       | Closing VND | Change (%) | Volume (share)    | Value (bil VND) | Ticker        | Buying (bil VND) | Selling (bil VND) | Net value (bil VND) |
| E1VFN30      | 20,690      | 0.3%       | 1,661,900         | 34.10           | E1VFN30       | 21.01            | 33.27             | (12.27)             |
| FUEMAV30     | 14,420      | 0.3%       | 14,200            | 0.20            | FUEMAV30      | 0.17             | 0.03              | 0.14                |
| FUESSV30     | 15,100      | 0.3%       | 6,900             | 0.10            | FUESSV30      | 0.00             | 0.03              | (0.03)              |
| FUESSV50     | 17,700      | -3.0%      | 900               | 0.02            | FUESSV50      | 0.00             | 0.00              | 0.00                |
| FUESSVFL     | 16,410      | 0.9%       | 20,700            | 0.34            | FUESSVFL      | 0.27             | 0.13              | 0.14                |
| FUEVFN30     | 25,970      | 1.2%       | 1,364,100         | 34.96           | FUEVFN30      | 29.56            | 28.14             | 1.42                |
| FUEVN100     | 15,620      | 0.0%       | 53,300            | 0.83            | FUEVN100      | 0.47             | 0.64              | (0.17)              |
| FUEIP100     | 8,900       | 0.6%       | 60,000            | 0.53            | FUEIP100      | 0.00             | 0.00              | 0.00                |
| FUEKIV30     | 7,940       | -0.3%      | 8,052,700         | 64.41           | FUEKIV30      | 64.19            | 64.21             | (0.02)              |
| <b>Total</b> |             |            | <b>11,234,700</b> | <b>135.49</b>   | <b>Total</b>  | <b>115.67</b>    | <b>126.45</b>     | <b>(10.79)</b>      |



## Statistics on guaranteed warrant trade

| Warrant code(*) | Closing rate (VND) | Change (%) | Matched volume | Day to maturity | Price (VND) | Theoretical buying rate (VND) (**) | Difference from closing rate (VND) | Operating price (VND) | Converting rate n:1 | Matured date |
|-----------------|--------------------|------------|----------------|-----------------|-------------|------------------------------------|------------------------------------|-----------------------|---------------------|--------------|
| CACB2201        | 290                | -3.3%      | 6,390          | 68              | 24,050      | 65                                 | (225)                              | 28,420                | 3.2                 | 20/09/2022   |
| CACB2203        | 800                | 1.3%       | 20,810         | 97              | 24,050      | 325                                | (475)                              | 26,420                | 2.4                 | 19/10/2022   |
| CACB2204        | 1,350              | -0.7%      | 3,590          | 116             | 24,050      | 654                                | (696)                              | 26,020                | 1.6                 | 07/11/2022   |
| CFPT2201        | 910                | 1.1%       | 28,340         | 68              | 82,800      | 417                                | (493)                              | 87,500                | 6.6                 | 20/09/2022   |
| CFPT2203        | 1,740              | 1.8%       | 23,360         | 18              | 82,800      | 1,565                              | (175)                              | 78,420                | 3.3                 | 01/08/2022   |
| CFPT2204        | 1,400              | 2.2%       | 1,900          | 146             | 82,800      | 603                                | (797)                              | 87,500                | 8.3                 | 07/12/2022   |
| CHDB2201        | 130                | -13.3%     | 29,240         | 69              | 23,700      | 20                                 | (110)                              | 31,000                | 5.0                 | 21/09/2022   |
| CHDB2203        | 60                 | -25.0%     | 45,940         | 32              | 23,700      | 9                                  | (51)                               | 28,890                | 5.0                 | 15/08/2022   |
| CHDB2204        | 140                | -26.3%     | 1,480          | 74              | 23,700      | 48                                 | (92)                               | 31,500                | 2.0                 | 26/09/2022   |
| CHDB2205        | 390                | -4.9%      | 46,930         | 98              | 23,700      | 154                                | (236)                              | 27,110                | 5.0                 | 20/10/2022   |
| CHDB2206        | 280                | -6.7%      | 103,880        | 173             | 23,700      | 94                                 | (186)                              | 30,000                | 8.0                 | 03/01/2023   |
| CHDB2207        | 1,350              | 1.5%       | 13,720         | 146             | 23,700      | 680                                | (670)                              | 24,500                | 3.0                 | 07/12/2022   |
| CHPG2201        | 100                | 0.0%       | 102,070        | 99              | 22,200      | 1                                  | (99)                               | 37,570                | 7.6                 | 21/10/2022   |
| CHPG2202        | 60                 | 20.0%      | 9,010          | 69              | 22,200      | 0                                  | (60)                               | 40,760                | 7.6                 | 21/09/2022   |
| CHPG2203        | 70                 | -12.5%     | 20,920         | 68              | 22,200      | 0                                  | (70)                               | 38,960                | 3.0                 | 20/09/2022   |
| CHPG2206        | 30                 | 0.0%       | 3,760          | 32              | 22,200      | 0                                  | (30)                               | 36,980                | 7.6                 | 15/08/2022   |
| CHPG2207        | 70                 | -12.5%     | 770            | 74              | 22,200      | 0                                  | (70)                               | 38,960                | 2.3                 | 26/09/2022   |
| CHPG2208        | 310                | -3.1%      | 32,090         | 85              | 22,200      | 18                                 | (292)                              | 30,260                | 3.8                 | 07/10/2022   |
| CHPG2209        | 130                | -13.3%     | 10             | 39              | 22,200      | 0                                  | (130)                              | 34,460                | 6.1                 | 22/08/2022   |
| CHPG2210        | 80                 | -11.1%     | 4,530          | 98              | 22,200      | 1                                  | (79)                               | 36,140                | 6.1                 | 20/10/2022   |
| CHPG2211        | 220                | -12.0%     | 3,110          | 97              | 22,200      | 7                                  | (213)                              | 33,660                | 3.0                 | 19/10/2022   |
| CHPG2212        | 300                | 0.0%       | 104,080        | 166             | 22,200      | 80                                 | (220)                              | 27,830                | 7.6                 | 27/12/2022   |
| CHPG2213        | 1,460              | -3.3%      | 228,110        | 109             | 22,200      | 218                                | (1,242)                            | 26,480                | 2.3                 | 31/10/2022   |
| CHPG2214        | 370                | 0.0%       | 89,000         | 173             | 22,200      | 67                                 | (303)                              | 28,740                | 7.6                 | 03/01/2023   |
| CKDH2201        | 80                 | 33.3%      | 35,220         | 83              | 36,800      | 2                                  | (78)                               | 55,990                | 7.3                 | 05/10/2022   |
| CKDH2203        | 10                 | 0.0%       | 13,660         | 4               | 36,800      | 0                                  | (10)                               | 51,790                | 1.8                 | 18/07/2022   |
| CKDH2204        | 50                 | 66.7%      | 15,120         | 32              | 36,800      | 1                                  | (49)                               | 48,460                | 7.3                 | 15/08/2022   |
| CKDH2205        | 100                | 11.1%      | 2,090          | 74              | 36,800      | 12                                 | (88)                               | 52,700                | 2.7                 | 26/09/2022   |
| CKDH2206        | 150                | 36.4%      | 27,350         | 68              | 36,800      | 15                                 | (135)                              | 48,160                | 7.3                 | 20/09/2022   |
| CKDH2207        | 580                | 20.8%      | 100            | 116             | 36,800      | 186                                | (394)                              | 45,430                | 3.6                 | 07/11/2022   |
| CKDH2208        | 2,050              | 5.7%       | 250            | 146             | 36,800      | 881                                | (1,169)                            | 35,890                | 4.5                 | 07/12/2022   |
| CMBB2201        | 580                | 3.6%       | 9,860          | 68              | 25,500      | 195                                | (385)                              | 29,500                | 2.0                 | 20/09/2022   |
| CMBB2203        | 200                | 0.0%       | 490            | 74              | 25,500      | 17                                 | (183)                              | 35,500                | 2.0                 | 26/09/2022   |
| CMBB2204        | 800                | 3.9%       | 860            | 116             | 25,500      | 255                                | (545)                              | 31,000                | 2.0                 | 07/11/2022   |
| CMBB2205        | 1,310              | 0.0%       | 98,240         | 109             | 25,500      | 171                                | (1,139)                            | 32,000                | 2.0                 | 31/10/2022   |
| CMBB2206        | 550                | -3.5%      | 10,450         | 81              | 25,500      | 385                                | (165)                              | 22,220                | 10.0                | 03/10/2022   |
| CMBB2207        | 630                | -8.7%      | 7,580          | 173             | 25,500      | 372                                | (258)                              | 23,460                | 10.0                | 03/01/2023   |
| CMSN2201        | 140                | -6.7%      | 6,530          | 69              | 102,500     | 23                                 | (117)                              | 140,690               | 16.6                | 21/09/2022   |
| CMSN2202        | 210                | 0.0%       | 710            | 85              | 102,500     | 225                                | 15                                 | 126,620               | 8.3                 | 07/10/2022   |
| CMSN2203        | 100                | -16.7%     | 38,110         | 39              | 102,500     | 24                                 | (76)                               | 125,860               | 19.9                | 22/08/2022   |
| CMSN2204        | 890                | -5.3%      | 11,830         | 116             | 102,500     | 535                                | (355)                              | 115,650               | 9.9                 | 07/11/2022   |
| CMSN2205        | 760                | -1.3%      | 2,890          | 166             | 102,500     | 404                                | (356)                              | 113,150               | 19.9                | 27/12/2022   |
| CMSN2206        | 510                | -5.6%      | 9,230          | 173             | 102,500     | 188                                | (322)                              | 132,360               | 19.9                | 03/01/2023   |
| CMSN2207        | 1,040              | -7.1%      | 110            | 179             | 102,500     | 474                                | (566)                              | 128,060               | 9.9                 | 09/01/2023   |
| CMSN2208        | 1,130              | 0.9%       | 9,660          | 85              | 102,500     | 525                                | (605)                              | 104,230               | 14.9                | 07/10/2022   |
| CMWG2201        | 990                | -7.5%      | 11,640         | 68              | 62,600      | 471                                | (519)                              | 66,860                | 5.0                 | 20/09/2022   |
| CMWG2202        | 110                | -15.4%     | 29,480         | 18              | 62,600      | 29                                 | (81)                               | 72,080                | 3.0                 | 01/08/2022   |
| CMWG2203        | 650                | 0.0%       | 3,060          | 74              | 62,600      | 282                                | (368)                              | 73,570                | 3.5                 | 26/09/2022   |
| CMWG2204        | 660                | -2.9%      | 3,950          | 85              | 62,600      | 294                                | (366)                              | 72,080                | 5.0                 | 07/10/2022   |
| CMWG2205        | 690                | -2.8%      | 20,280         | 116             | 62,600      | 238                                | (452)                              | 77,300                | 5.0                 | 07/11/2022   |
| CMWG2206        | 1,100              | 0.0%       | 0              | 179             | 62,600      | 171                                | (929)                              | 88,060                | 5.0                 | 09/01/2023   |
| CNVL2201        | 160                | 0.0%       | 6,590          | 83              | 73,700      | 6                                  | (154)                              | 93,980                | 20.0                | 05/10/2022   |
| CNVL2202        | 190                | -5.0%      | 200            | 32              | 73,700      | 30                                 | (160)                              | 80,000                | 16.0                | 15/08/2022   |
| CNVL2203        | 340                | -5.6%      | 310            | 74              | 73,700      | 23                                 | (317)                              | 92,500                | 5.0                 | 26/09/2022   |



|          |       |        |         |     |         |       |       |         |      |            |
|----------|-------|--------|---------|-----|---------|-------|-------|---------|------|------------|
| CNVL2204 | 240   | 0.0%   | 60      | 68  | 73,700  | 25    | (215) | 86,000  | 16.0 | 20/09/2022 |
| CNVL2205 | 650   | 0.0%   | 30      | 166 | 73,700  | 165   | (485) | 81,890  | 16.0 | 27/12/2022 |
| CNVL2206 | 660   | 1.5%   | 20      | 173 | 73,700  | 139   | (521) | 84,000  | 16.0 | 03/01/2023 |
| CNVL2207 | 1,030 | 0.0%   | 0       | 179 | 73,700  | 232   | (798) | 84,000  | 10.0 | 09/01/2023 |
| CPDR2201 | 160   | 0.0%   | 19,010  | 83  | 52,800  | 2     | (158) | 83,080  | 3.7  | 05/10/2022 |
| CPDR2202 | 50    | 0.0%   | 10,330  | 32  | 52,800  | 1     | (49)  | 67,610  | 11.7 | 15/08/2022 |
| CPDR2203 | 160   | 0.0%   | 4,340   | 68  | 52,800  | 24    | (136) | 66,000  | 10.0 | 20/09/2022 |
| CPDR2204 | 580   | 7.4%   | 90      | 173 | 52,800  | 198   | (382) | 57,980  | 16.0 | 03/01/2023 |
| CPNJ2201 | 3,060 | 2.0%   | 10,710  | 68  | 115,500 | 2,847 | (213) | 94,470  | 7.9  | 20/09/2022 |
| CPNJ2202 | 880   | -1.1%  | 12,790  | 81  | 115,500 | 755   | (125) | 99,480  | 24.9 | 03/10/2022 |
| CPNJ2203 | 890   | -1.1%  | 19,560  | 173 | 115,500 | 643   | (247) | 109,430 | 24.9 | 03/01/2023 |
| CPNJ2204 | 1,350 | -4.3%  | 170     | 179 | 115,500 | 474   | (876) | 142,260 | 9.9  | 09/01/2023 |
| CPOW2202 | 350   | 2.9%   | 880     | 124 | 13,100  | 61    | (289) | 18,000  | 5.0  | 15/11/2022 |
| CPOW2203 | 480   | -5.9%  | 61,390  | 53  | 13,100  | 120   | (360) | 15,700  | 2.0  | 05/09/2022 |
| CSTB2201 | 200   | 0.0%   | 26,350  | 69  | 23,300  | 45    | (155) | 29,890  | 5.0  | 21/09/2022 |
| CSTB2202 | 300   | 0.0%   | 2,740   | 68  | 23,300  | 126   | (174) | 29,500  | 2.0  | 20/09/2022 |
| CSTB2205 | 30    | 0.0%   | 46,030  | 32  | 23,300  | 0     | (30)  | 34,570  | 8.0  | 15/08/2022 |
| CSTB2206 | 120   | 0.0%   | 740     | 74  | 23,300  | 7     | (113) | 37,500  | 2.0  | 26/09/2022 |
| CSTB2207 | 120   | 9.1%   | 46,530  | 39  | 23,300  | 21    | (99)  | 28,890  | 5.0  | 22/08/2022 |
| CSTB2208 | 300   | 0.0%   | 5,350   | 98  | 23,300  | 79    | (221) | 30,110  | 5.0  | 20/10/2022 |
| CSTB2209 | 460   | 820.0% | 480     | 97  | 23,300  | 75    | (385) | 32,000  | 3.0  | 19/10/2022 |
| CSTB2210 | 660   | -5.7%  | 70,020  | 116 | 23,300  | 381   | (279) | 28,500  | 2.0  | 07/11/2022 |
| CSTB2211 | 560   | 1.8%   | 183,770 | 166 | 23,300  | 355   | (205) | 23,330  | 8.0  | 27/12/2022 |
| CSTB2212 | 1,490 | -0.7%  | 120,180 | 109 | 23,300  | 639   | (851) | 26,000  | 2.0  | 31/10/2022 |
| CSTB2213 | 580   | 0.0%   | 2,420   | 173 | 23,300  | 304   | (276) | 24,440  | 8.0  | 03/01/2023 |
| CSTB2214 | 2,190 | 0.5%   | 10,630  | 179 | 23,300  | 1,553 | (637) | 23,000  | 2.0  | 09/01/2023 |
| CTCB2201 | 80    | 0.0%   | 1,140   | 68  | 35,950  | 1     | (79)  | 55,000  | 4.0  | 20/09/2022 |
| CTCB2203 | 10    | -50.0% | 6,940   | 18  | 35,950  | 0     | (10)  | 52,000  | 2.0  | 01/08/2022 |
| CTCB2204 | 470   | 4.4%   | 8,110   | 85  | 35,950  | 56    | (414) | 45,000  | 5.0  | 07/10/2022 |
| CTCB2205 | 570   | -1.7%  | 1,020   | 97  | 35,950  | 49    | (521) | 46,500  | 5.0  | 19/10/2022 |
| CTCB2206 | 570   | -5.0%  | 59,970  | 116 | 35,950  | 174   | (396) | 43,500  | 4.0  | 07/11/2022 |
| CTPB2201 | 90    | -10.0% | 4,790   | 68  | 26,900  | 5     | (85)  | 42,000  | 4.0  | 20/09/2022 |
| CTPB2202 | 10    | -50.0% | 54,050  | 4   | 26,900  | 0     | (10)  | 42,000  | 2.0  | 18/07/2022 |
| CVHM2115 | 30    | 0.0%   | 28,580  | 34  | 60,100  | 0     | (30)  | 91,330  | 9.7  | 17/08/2022 |
| CVHM2201 | 40    | -42.9% | 33,590  | 69  | 60,100  | 0     | (40)  | 85,190  | 15.5 | 21/09/2022 |
| CVHM2202 | 70    | 16.7%  | 10,840  | 68  | 60,100  | 0     | (70)  | 90,360  | 7.8  | 20/09/2022 |
| CVHM2204 | 20    | 0.0%   | 101,740 | 18  | 60,100  | 0     | (20)  | 79,670  | 3.9  | 01/08/2022 |
| CVHM2205 | 40    | 0.0%   | 320     | 32  | 60,100  | 0     | (40)  | 76,650  | 15.5 | 15/08/2022 |
| CVHM2206 | 130   | -31.6% | 680     | 74  | 60,100  | 3     | (127) | 83,560  | 4.9  | 26/09/2022 |
| CVHM2207 | 530   | 0.0%   | 100     | 97  | 60,100  | 89    | (441) | 70,930  | 7.8  | 19/10/2022 |
| CVHM2208 | 690   | -1.4%  | 6,830   | 116 | 60,100  | 213   | (477) | 67,040  | 7.8  | 07/11/2022 |
| CVHM2209 | 440   | -2.2%  | 110     | 166 | 60,100  | 111   | (329) | 69,980  | 15.5 | 27/12/2022 |
| CVHM2210 | 340   | 0.0%   | 41,030  | 173 | 60,100  | 32    | (308) | 80,000  | 16.0 | 03/01/2023 |
| CVIC2201 | 100   | -9.1%  | 430     | 69  | 69,500  | 0     | (100) | 103,980 | 16.0 | 21/09/2022 |
| CVIC2202 | 80    | -11.1% | 22,870  | 32  | 69,500  | 2     | (78)  | 82,220  | 16.0 | 15/08/2022 |
| CVIC2203 | 220   | 0.0%   | 30      | 85  | 69,500  | 23    | (197) | 86,000  | 10.0 | 07/10/2022 |
| CVIC2204 | 100   | -9.1%  | 68,940  | 39  | 69,500  | 3     | (97)  | 83,330  | 16.0 | 22/08/2022 |
| CVIC2205 | 260   | 0.0%   | 117,160 | 98  | 69,500  | 18    | (242) | 86,670  | 16.0 | 20/10/2022 |
| CVIC2206 | 380   | 0.0%   | 10      | 67  | 69,500  | 28    | (352) | 82,500  | 10.0 | 19/09/2022 |
| CVJC2201 | 50    | 0.0%   | 3,530   | 32  | 126,700 | 0     | (50)  | 160,000 | 20.0 | 15/08/2022 |
| CVJC2202 | 180   | 0.0%   | 24,790  | 68  | 126,700 | 10    | (170) | 156,790 | 20.0 | 20/09/2022 |
| CVJC2203 | 1,010 | 1.0%   | 3,190   | 166 | 126,700 | 393   | (617) | 131,130 | 20.0 | 27/12/2022 |
| CVNM2201 | 270   | -3.6%  | 10,420  | 69  | 72,400  | 11    | (259) | 85,600  | 15.2 | 21/09/2022 |
| CVNM2203 | 160   | -11.1% | 1,480   | 32  | 72,400  | 17    | (143) | 78,450  | 19.3 | 15/08/2022 |
| CVNM2204 | 810   | 1.3%   | 42,450  | 85  | 72,400  | 460   | (350) | 70,600  | 9.7  | 07/10/2022 |
| CVNM2205 | 580   | 0.0%   | 0       | 98  | 72,400  | 116   | (464) | 77,370  | 15.5 | 20/10/2022 |
| CVNM2206 | 840   | -2.3%  | 250     | 97  | 72,400  | 205   | (635) | 77,370  | 8.7  | 19/10/2022 |
| CVPB2201 | 150   | -16.7% | 5,870   | 68  | 28,050  | 20    | (130) | 37,000  | 5.0  | 20/09/2022 |
| CVPB2202 | 10    | 0.0%   | 1,400   | 4   | 28,050  | 0     | (10)  | 39,000  | 2.0  | 18/07/2022 |
| CVPB2204 | 400   | 0.0%   | 11,680  | 124 | 28,050  | 93    | (307) | 30,890  | 16.0 | 15/11/2022 |

|          |       |        |        |     |        |     |       |        |     |            |
|----------|-------|--------|--------|-----|--------|-----|-------|--------|-----|------------|
| CVPB2205 | 290   | 11.5%  | 1,660  | 67  | 28,050 | 20  | (270) | 37,500 | 4.0 | 19/09/2022 |
| CVPB2206 | 630   | 0.0%   | 1,110  | 116 | 28,050 | 128 | (502) | 38,000 | 2.0 | 07/11/2022 |
| CVRE2201 | 110   | -15.4% | 10,380 | 68  | 26,050 | 30  | (80)  | 34,000 | 4.0 | 20/09/2022 |
| CVRE2203 | 40    | 0.0%   | 14,620 | 32  | 26,050 | 3   | (37)  | 33,980 | 4.0 | 15/08/2022 |
| CVRE2204 | 330   | -2.9%  | 1,510  | 85  | 26,050 | 55  | (275) | 33,000 | 5.0 | 07/10/2022 |
| CVRE2205 | 100   | -16.7% | 6,740  | 39  | 26,050 | 14  | (86)  | 32,220 | 5.0 | 22/08/2022 |
| CVRE2206 | 250   | 0.0%   | 0      | 98  | 26,050 | 33  | (217) | 35,560 | 5.0 | 20/10/2022 |
| CVRE2207 | 190   | 0.0%   | 51,520 | 98  | 26,050 | 41  | (149) | 33,330 | 8.0 | 20/10/2022 |
| CVRE2208 | 780   | -8.2%  | 250    | 116 | 26,050 | 306 | (474) | 32,000 | 2.0 | 07/11/2022 |
| CVRE2209 | 410   | 0.0%   | 35,670 | 166 | 26,050 | 152 | (258) | 30,890 | 8.0 | 27/12/2022 |
| CVRE2210 | 1,030 | -4.6%  | 1,230  | 146 | 26,050 | 401 | (629) | 28,800 | 4.0 | 07/12/2022 |

(\*) All warrants are bought and operated in Euro model and payment method is in cash

(\*\*) PHS evaluates in Black-Scholes model

## LIST OF CODES ANALYZED

| Ticker                    | Exchange | Market price | Reasonable price * | Report date | 2022F EAT (bil. VND) | PE forward | PB forward |
|---------------------------|----------|--------------|--------------------|-------------|----------------------|------------|------------|
| <a href="#">OCB</a> (New) | HOSE     | 17,750       | 33,000             | 11/07/2022  | 4,892                | 9.2        | 1.7        |
| <a href="#">VPB</a> (New) | HOSE     | 28,050       | 53,200             | 11/07/2022  | 19,558               | 12.3       | 2.4        |
| <a href="#">TCB</a> (New) | HOSE     | 35,950       | 65,700             | 11/07/2022  | 22,735               | 10.2       | 2.0        |
| <a href="#">MBB</a> (New) | HOSE     | 25,500       | 36,800             | 11/07/2022  | 17,241               | 8.1        | 1.8        |
| <a href="#">VCB</a> (New) | HOSE     | 72,400       | 126,500            | 11/07/2022  | 26,600               | 17.6       | 3.6        |
| <a href="#">BID</a>       | HOSE     | 36,150       | 43,900             | 11/07/2022  | 14,485               | 15.3       | 2.2        |
| <a href="#">CTG</a>       | HOSE     | 27,000       | 37,100             | 11/07/2022  | 15,100               | 11.8       | 1.7        |
| <a href="#">ACB</a>       | HOSE     | 24,050       | 36,800             | 11/07/2022  | 17,241               | 8.0        | 1.8        |
| <a href="#">HDB</a>       | HOSE     | 23,700       | 36,100             | 11/07/2022  | 8,189                | 9.9        | 1.9        |
| <a href="#">TPB</a>       | HOSE     | 26,900       | 36,300             | 11/07/2022  | 5,828                | 9.9        | 1.8        |
| <a href="#">VIB</a>       | HOSE     | 24,450       | 38,200             | 11/07/2022  | 7,778                | 10.3       | 2.5        |
| <a href="#">LPB</a>       | HOSE     | 13,950       | 20,100             | 11/07/2022  | 3,730                | 8.1        | 1.3        |
| <a href="#">MSB</a>       | HOSE     | 17,250       | 29,500             | 11/07/2022  | 4,858                | 9.3        | 1.4        |
| <a href="#">BVH</a>       | HOSE     | 57,900       | 82,700             | 11/07/2022  | 2,920                | 22.1       | 2.6        |
| <a href="#">PVI</a>       | HNX      | 44,500       | 59,680             | 11/07/2022  | 1,031                | 13.6       | 1.7        |
| <a href="#">BMI</a>       | HOSE     | 28,800       | 42,000             | 11/07/2022  | 267                  | 14.3       | 1.5        |
| <a href="#">KBC</a>       | HOSE     | 35,950       | 55,000             | 11/07/2022  | 4,503                | 13.8       | 1.7        |
| <a href="#">GVR</a>       | HOSE     | 23,200       | 32,100             | 11/07/2022  | 5,812                | 27.6       | 2.3        |
| <a href="#">LHG</a>       | HOSE     | 34,500       | 88,000             | 11/07/2022  | 599                  | 7.3        | 2.3        |
| <a href="#">POW</a>       | HOSE     | 13,100       | 15,400             | 11/07/2022  | 2,913                | 14.0       | 1.0        |
| <a href="#">PPC</a>       | HOSE     | 17,500       | 21,000             | 11/07/2022  | 320                  | 14.5       | 1.4        |
| <a href="#">NT2</a>       | HOSE     | 24,100       | 27,500             | 11/07/2022  | 692                  | 11.4       | 1.8        |
| <a href="#">GEG</a>       | HOSE     | 21,150       | 22,400             | 11/07/2022  | 528                  | 16.2       | 1.7        |
| <a href="#">REE</a>       | HOSE     | 77,500       | 84,700             | 11/07/2022  | 2,873                | 12.4       | 1.3        |
| <a href="#">GMD</a>       | HOSE     | 49,450       | 61,600             | 11/07/2022  | 819                  | 22.7       | 2.6        |
| <a href="#">FPT</a>       | HOSE     | 82,800       | 125,100            | 11/07/2022  | 6,053                | 32.2       | 6.5        |
| <a href="#">CTR</a>       | HOSE     | 62,800       | 84,500             | 11/07/2022  | 394                  | 24.5       | 6.2        |
| <a href="#">HPG</a>       | HOSE     | 22,200       | 45,400             | 11/07/2022  | 27,883               | 10.6       | 2.4        |
| <a href="#">HSG</a>       | HOSE     | 18,000       | 23,400             | 11/07/2022  | 2,842                | 4.1        | 1.1        |
| <a href="#">SMC</a>       | HOSE     | 18,700       | 25,400             | 11/07/2022  | 996                  | 1.6        | 0.7        |
| <a href="#">NKG</a>       | HOSE     | 19,500       | 22,500             | 11/07/2022  | 1,373                | 3.6        | 0.7        |
| <a href="#">BMP</a>       | HOSE     | 56,000       | 62,500             | 11/07/2022  | 422                  | 12.1       | 2.1        |
| <a href="#">CTD</a>       | HOSE     | 62,100       | 54,100             | 11/07/2022  | 99                   | 6.0        | 0.4        |
| <a href="#">TNH</a>       | HOSE     | 44,000       | 50,000             | 11/07/2022  | 154                  | 13.5       | 2.3        |
| <a href="#">TRA</a>       | HOSE     | 87,900       | 124,200            | 11/07/2022  | 296                  | 17.4       | 3.4        |
| <a href="#">IMP</a>       | HOSE     | 62,000       | 70,200             | 11/07/2022  | 230                  | 20.4       | 2.4        |
| <a href="#">DHG</a>       | HOSE     | 88,200       | 118,500            | 11/07/2022  | 813                  | 19.1       | 3.8        |
| <a href="#">STK</a>       | HOSE     | 51,000       | 76,200             | 11/07/2022  | 300                  | 18.0       | 3.4        |
| <a href="#">TCM</a>       | HOSE     | 44,500       | 64,400             | 11/07/2022  | 264                  | 20.0       | 3.0        |

| Ticker              | Exchange | Market price | Reasonable price * | Report date | 2022F EAT (bil. VND) | PE forward | PB forward |
|---------------------|----------|--------------|--------------------|-------------|----------------------|------------|------------|
| <a href="#">VRE</a> | HOSE     | 26,050       | 40,720             | 11/07/2022  | 2,604                | 35.6       | 2.9        |
| <a href="#">KDH</a> | HOSE     | 36,800       | 55,700             | 11/07/2022  | 1,363                | 25.4       | 3.4        |
| <a href="#">NLG</a> | HOSE     | 38,000       | 64,800             | 11/07/2022  | 1,386                | 16.6       | 2.4        |
| <a href="#">VHM</a> | HOSE     | 60,100       | 110,600            | 11/07/2022  | 33,671               | 14.3       | 3.3        |
| <a href="#">MSN</a> | HOSE     | 102,500      | 164,800            | 11/07/2022  | 8,969                | 28.6       | 5.8        |
| <a href="#">VNM</a> | HOSE     | 72,400       | 100,900            | 11/07/2022  | 9,703                | 22.0       | 5.9        |
| <a href="#">KDC</a> | HOSE     | 61,400       | 65,000             | 11/07/2022  | 709                  | 24.0       | 2.8        |
| <a href="#">SAB</a> | HOSE     | 154,900      | 169,500            | 11/07/2022  | 4,398                | 26.0       | 4.7        |
| <a href="#">DBC</a> | HOSE     | 26,350       | 29,200             | 11/07/2022  | 473                  | 14.2       | 1.0        |
| <a href="#">BAF</a> | HOSE     | 37,100       | 41,300             | 11/07/2022  | 405                  | 14.6       | 2.4        |
| <a href="#">MPC</a> | HOSE     | 40,362       | 53,400             | 11/07/2022  | 1,225                | 9.2        | 1.7        |
| <a href="#">FMC</a> | HOSE     | 52,600       | 80,700             | 11/07/2022  | 385                  | 13.7       | 3.3        |
| <a href="#">ANV</a> | HOSE     | 45,300       | 50,300             | 11/07/2022  | 258                  | 25.8       | 2.7        |
| <a href="#">VHC</a> | HOSE     | 80,000       | 120,600            | 11/07/2022  | 1,644                | 13.5       | 3.1        |
| <a href="#">MWG</a> | HOSE     | 62,600       | 90,800             | 11/07/2022  | 6,512                | 20.4       | 5.1        |
| <a href="#">PNJ</a> | HOSE     | 115,500      | 138,700            | 11/07/2022  | 1,736                | 19.4       | 4.6        |
| <a href="#">FRT</a> | HOSE     | 76,000       | 115,000            | 11/07/2022  | 693                  | 19.7       | 6.0        |
| <a href="#">DGW</a> | HOSE     | 53,400       | 82,000             | 11/07/2022  | 805                  | 16.7       | 5.4        |
| <a href="#">PET</a> | HOSE     | 32,900       | 45,400             | 11/07/2022  | 303                  | 13.9       | 2.3        |
| <a href="#">PVT</a> | HOSE     | 19,250       | 32,000             | 11/07/2022  | 996                  | 10.4       | 1.5        |
| <a href="#">BSR</a> | UPCOM    | 23,057       | 32,300             | 11/07/2022  | 9,749                | 10.2       | 2.1        |
| <a href="#">PLX</a> | HOSE     | 40,100       | 53,900             | 11/07/2022  | 3,088                | 15.6       | 2.6        |
| <a href="#">GAS</a> | HOSE     | 98,800       | 134,300            | 11/07/2022  | 16,312               | 15.9       | 4.1        |

Source: PHFM

\* Reasonable price is not included with operating rights after report date



### **Analyst Certification**

The report is made by Pham Quang Chuong, analyst – Phu Hung Fund Management Joint Stock Company. Each research analyst(s), strategist(s) or research associate(s) responsible for the preparation and content of all or any identified portion of this research report hereby certifies that, with respect to each issuer or security or any identified portion of the report with respect to each issuer or security that the research analyst, strategist or research associate covers in this research report, all of the views expressed by that research analyst, strategist or research associate in this research report accurately reflect their personal views about those issuer(s) or securities. Each research analyst(s), strategist(s) or research associate(s) also certify that no part of their compensation was, is, or will be, directly or indirectly, related to the specific recommendation(s) or view(s) expressed by that research analyst, strategist or research associate in this research report.

### **Ratings Definition**

Buy = higher than domestic market by over 10%  
Hold = similar to domestic market at the rate of +10% ~ -10%  
Sell = lower than domestic market by below 10%  
No rating = the code is not rated in Phu Hung or not yet listed  
The performance is determined by total recollection in 12 months (including dividend).

### **Analyst Certification**

This information has been compiled from sources we believe to be reliable, but we do not hold ourselves responsible for its completeness or accuracy. It is not an offer to sell or solicitation of an offer to buy any securities. Phu Hung Securities and its affiliates and their officers and employees may or may not have a position in or with respect to the securities mentioned herein. Phu Hung Securities (or one of its affiliates) may from time to time perform investment banking or other services or solicit investment banking or other business for any company mentioned in this report. All opinions and estimates included in this report constitute our judgment as of this date and are subject to change without notice.

© Phu Hung Fund Management Joint Stock Company  
21st Floor, Phu My Hung Building, 08 Hoang Van Thai St, Tan Phu Ward. District 7, HCM.  
Phone: (84-28) 5413 7991  
Web: [www.phfm.vn](http://www.phfm.vn)